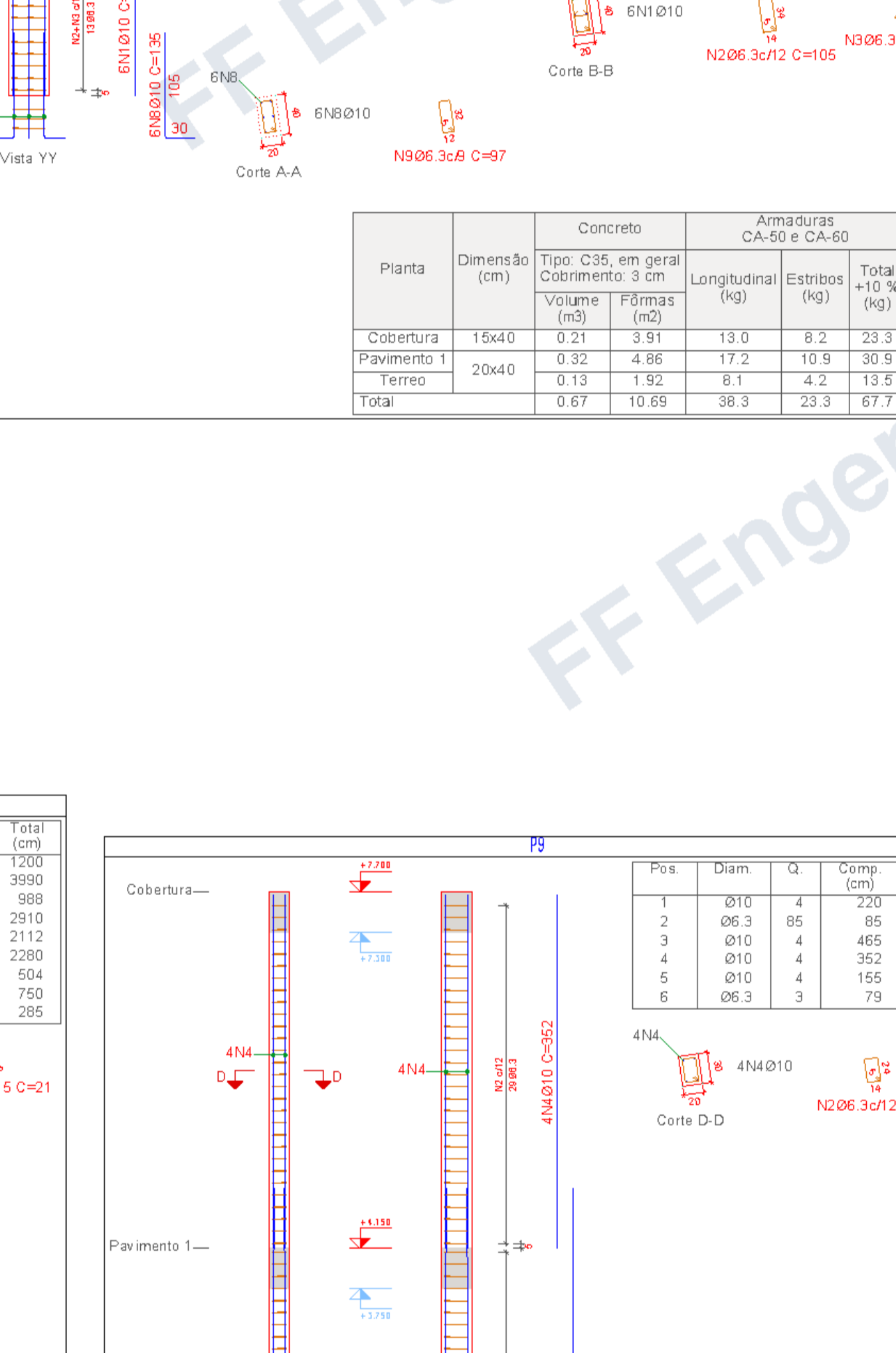
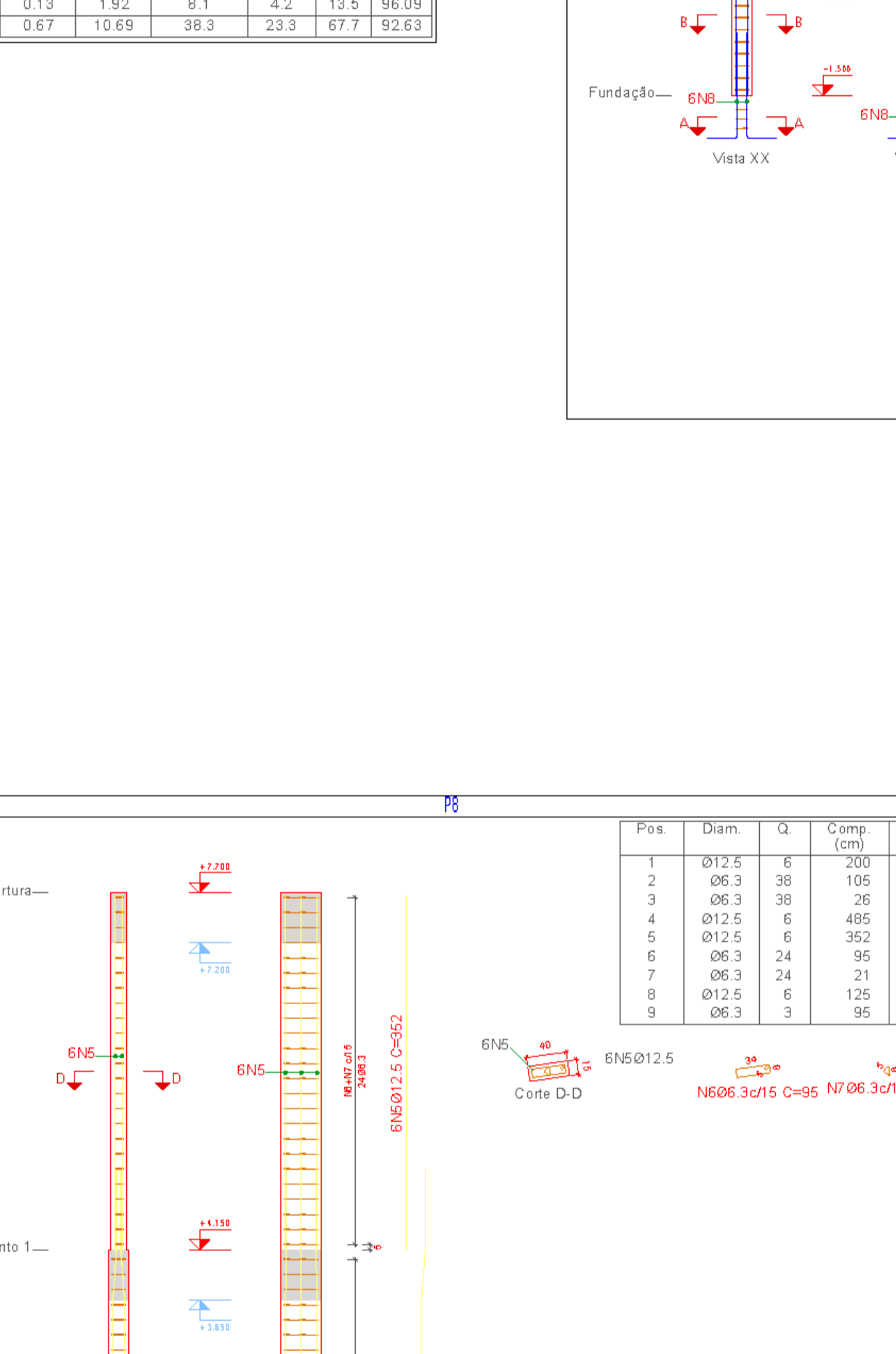
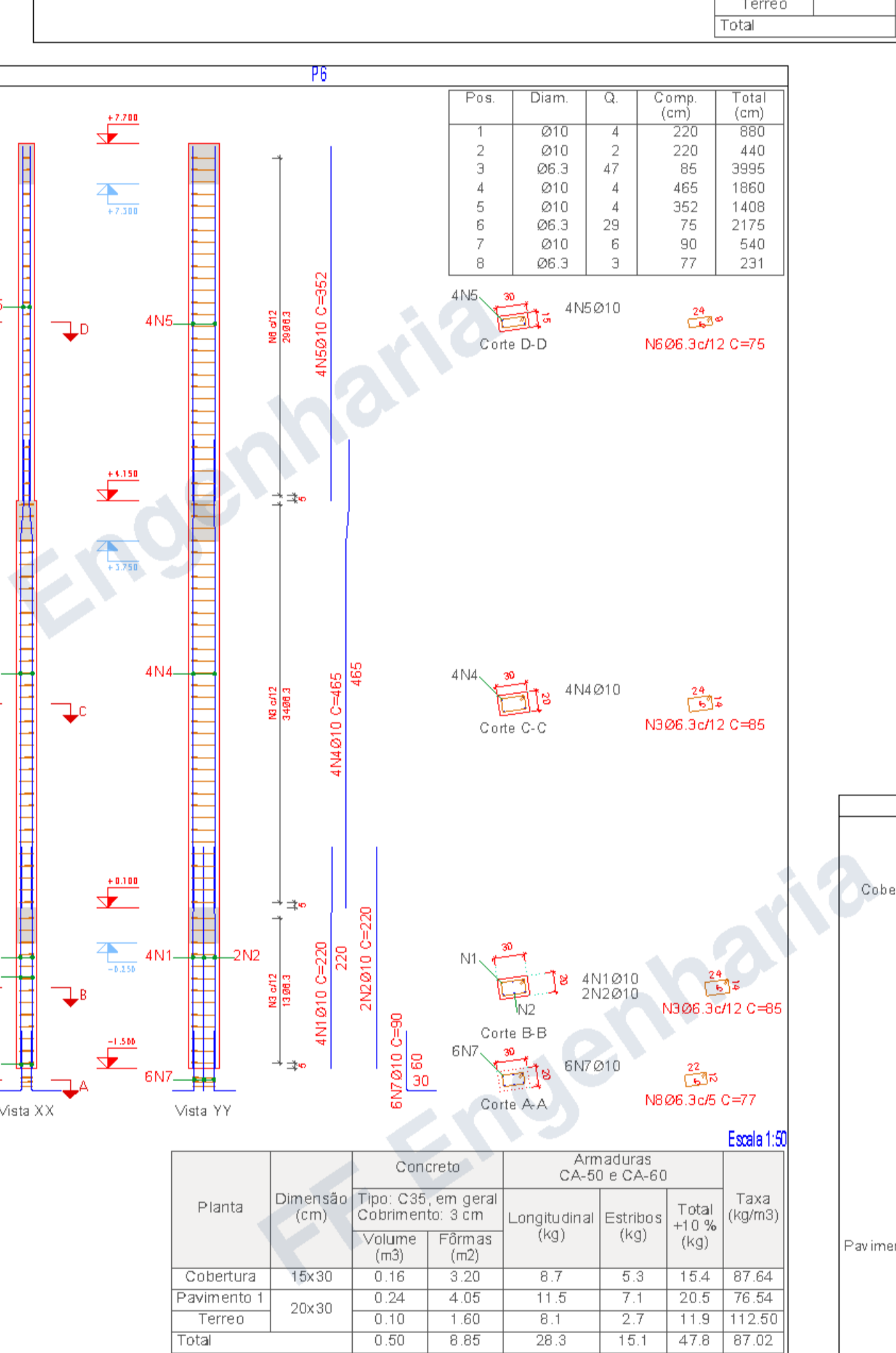
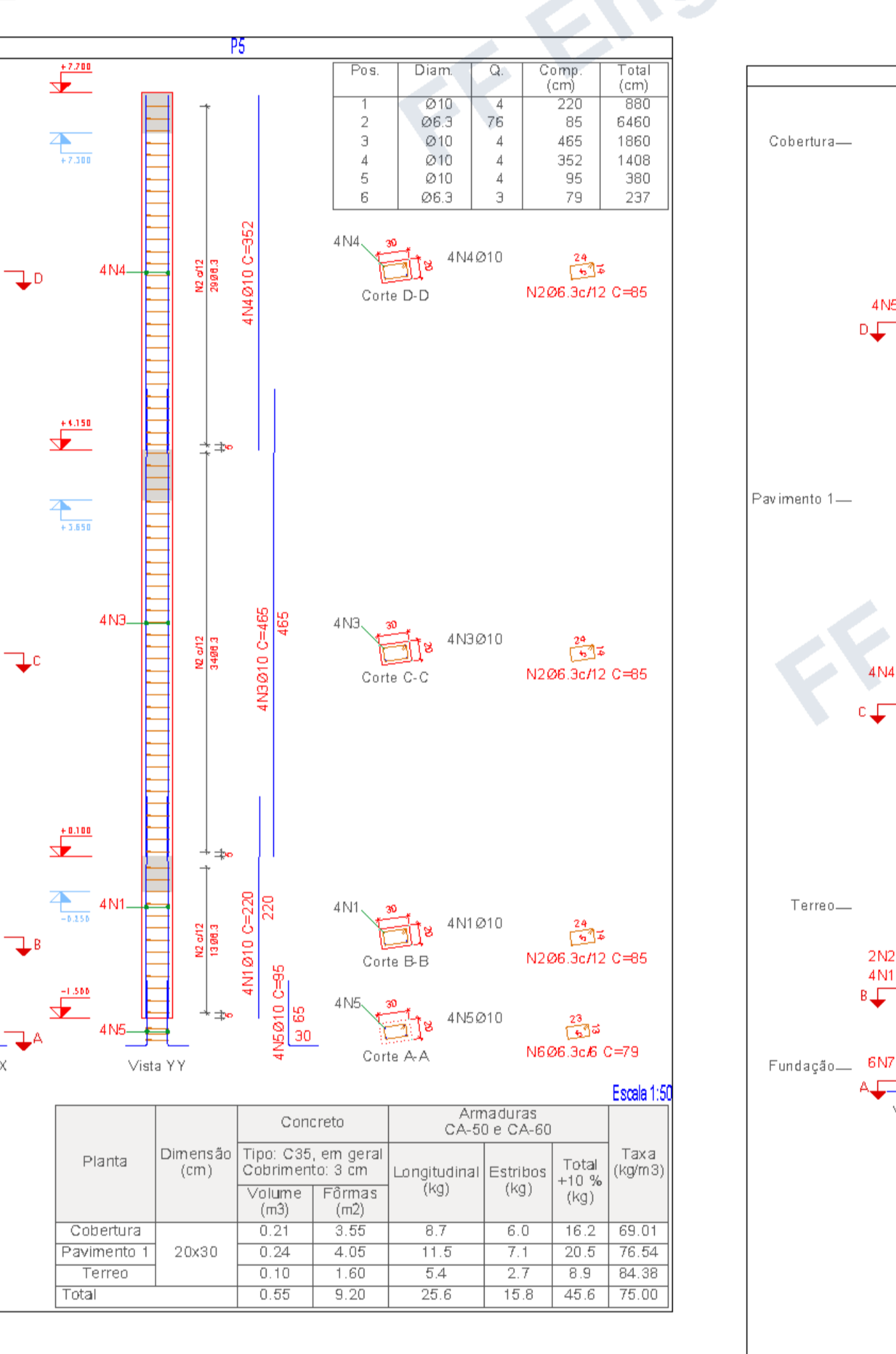
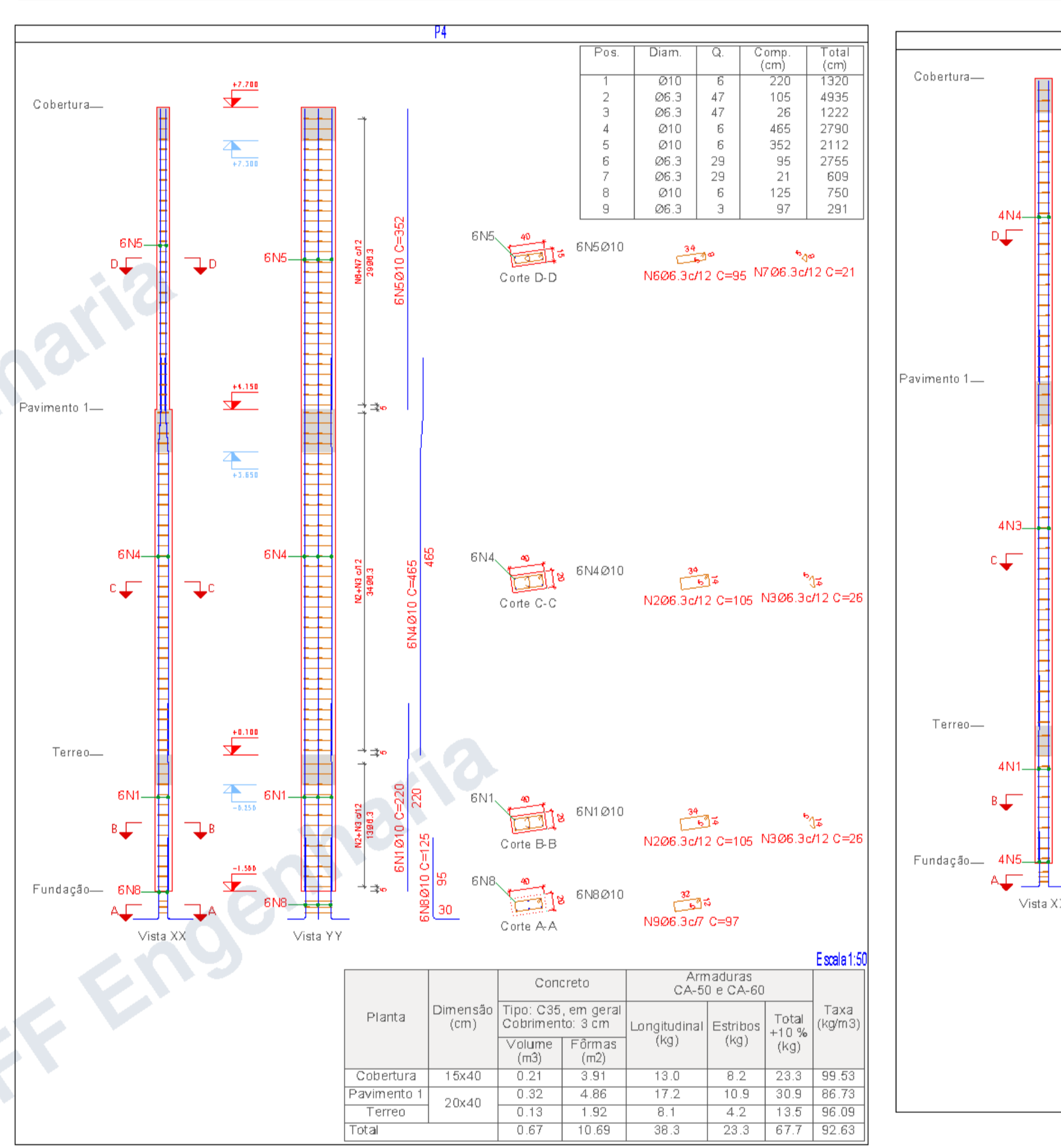
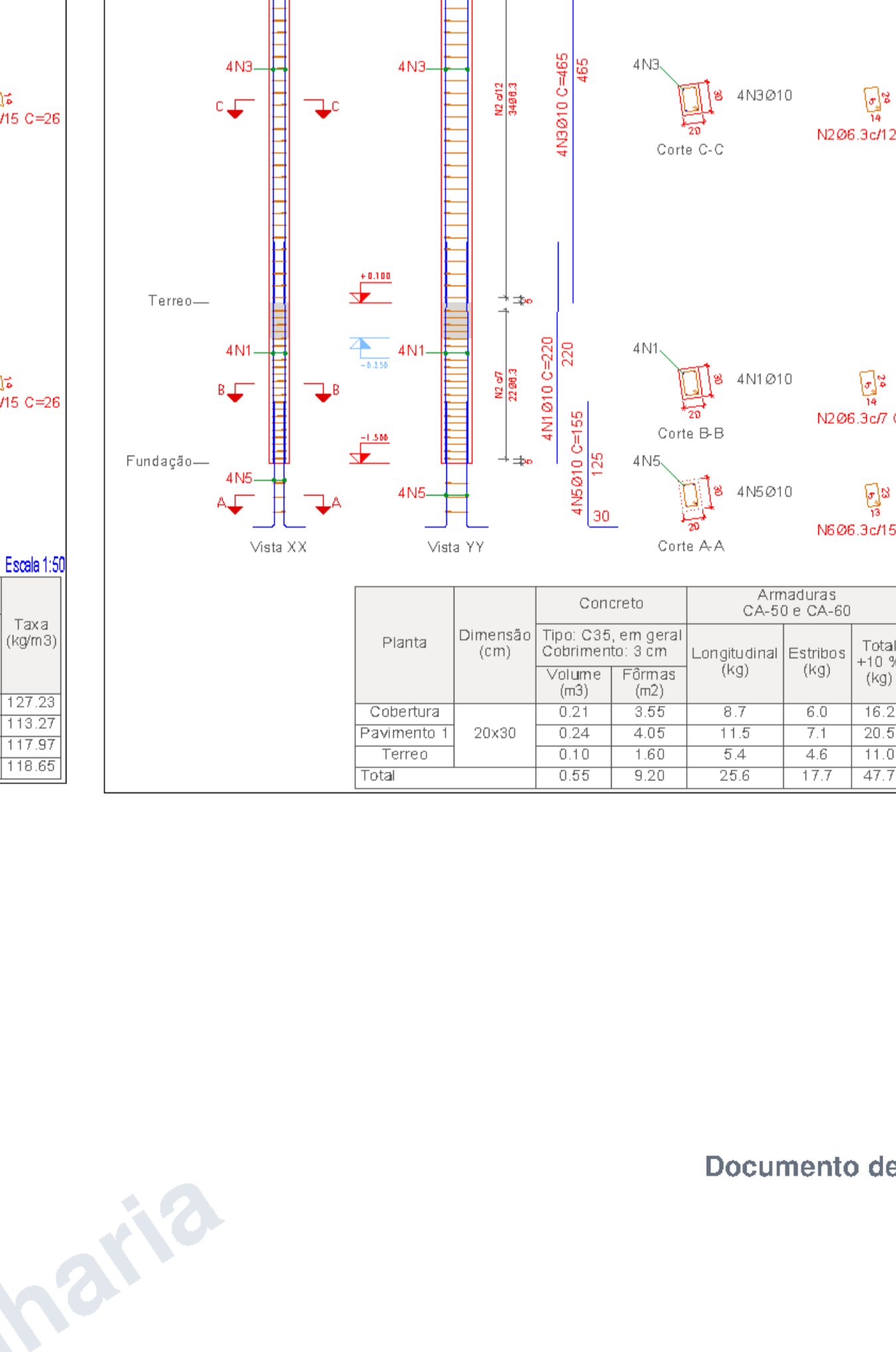
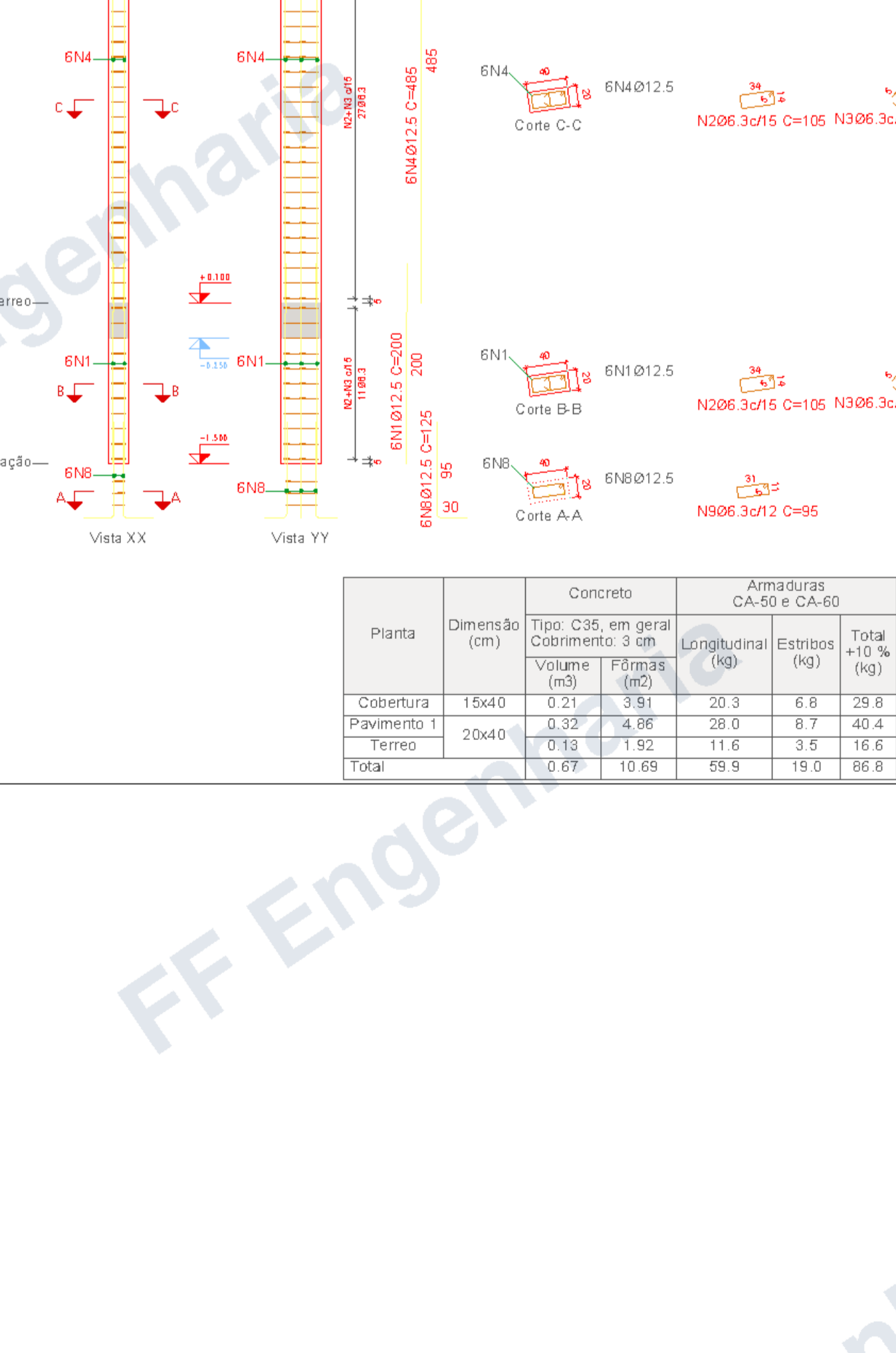
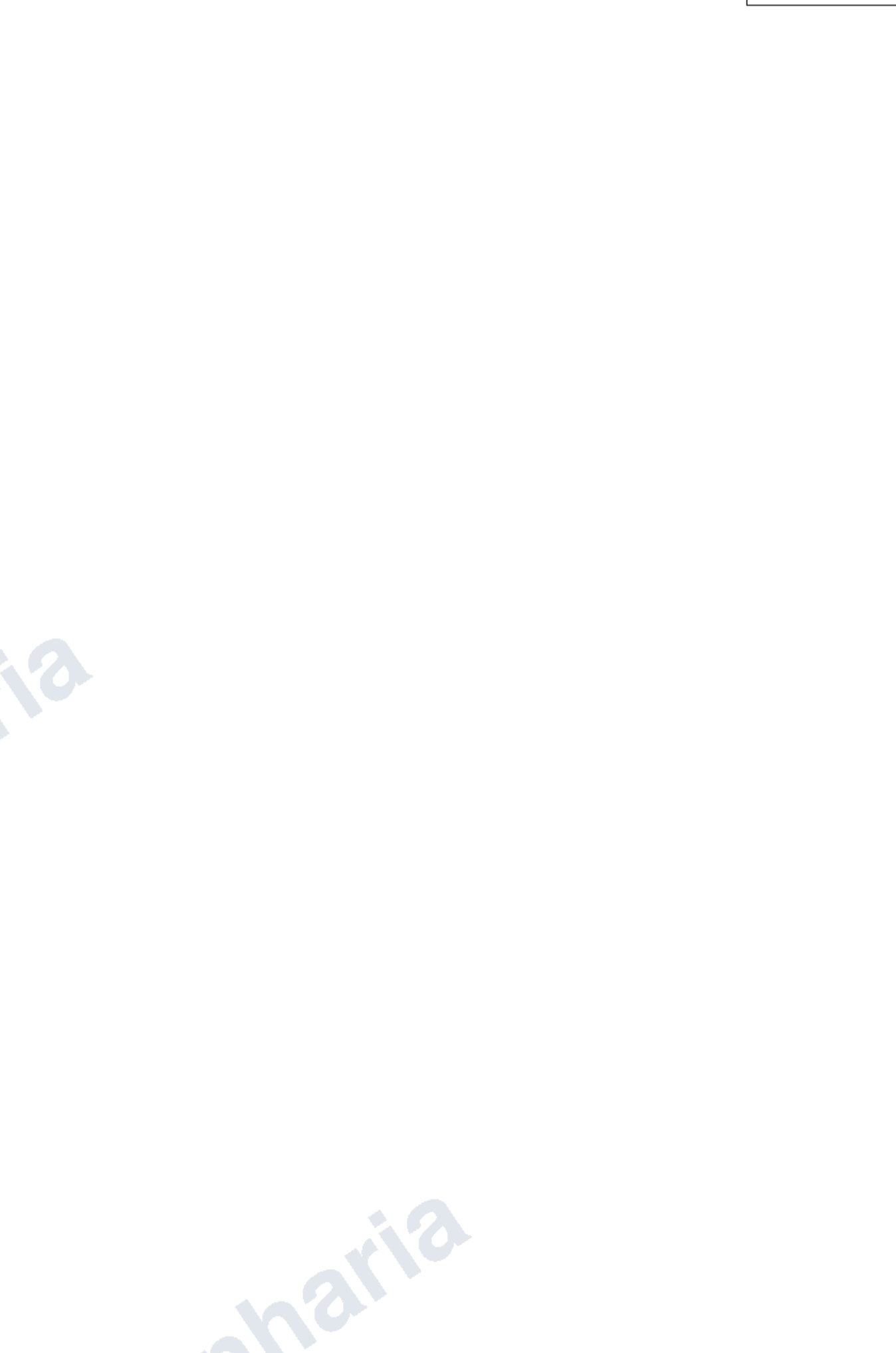


Planta	Dimensão (cm)	Concreto	Armaduras CA-50 e CA-60	Taxa (kg/m³)
Cobertura	15x30	0.21	3.55	8.7
Pavimento 1	20x30	0.24	4.05	17.2
Terreo	0.10	1.60	25.0	1.5
Total	0.55	9.20	46.7	15.0



Planta	Dimensão (cm)	Concreto	Armaduras CA-50 e CA-60	Taxa (kg/m³)
Cobertura	15x40	0.21	3.91	13.0
Pavimento 1	20x40	0.22	4.86	17.2
Terreo	0.13	1.92	8.1	2.2
Total	0.67	10.69	38.3	23.3



Planta	Dimensão (cm)	Concreto	Armaduras CA-50 e CA-60	Taxa (kg/m³)
Cobertura	15x40	0.21	3.55	8.7
Pavimento 1	20x40	0.24	4.05	17.2
Terreo	0.10	1.60	25.0	1.5
Total	0.65	9.20	46.7	15.0

Pilares que nascem em Terreo e chegam em Cobertura
 Concreto: C35, em geral
 Aço das barras: CA-50 e CA-60
 Aço dos estribos: CA-50 e CA-60