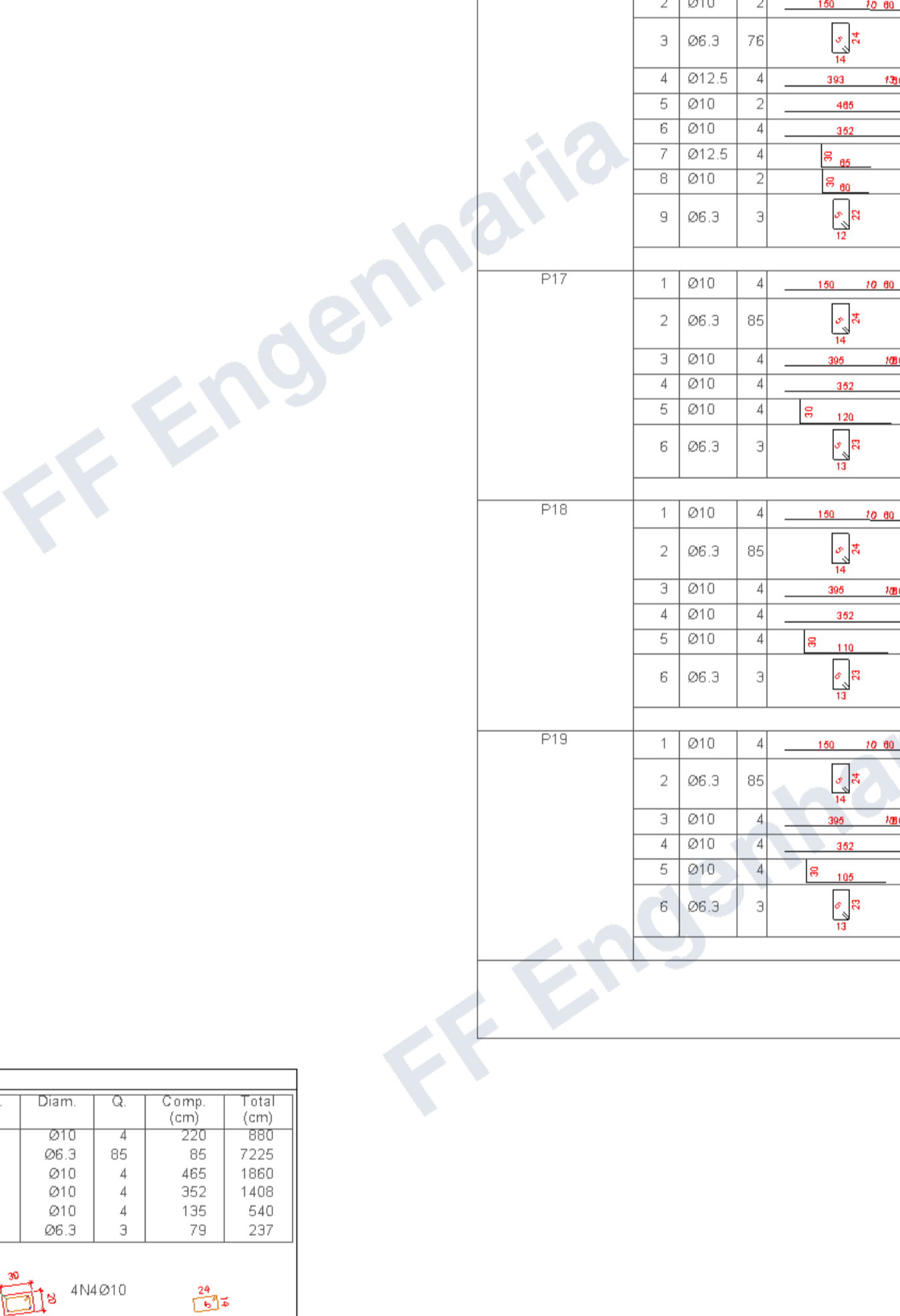
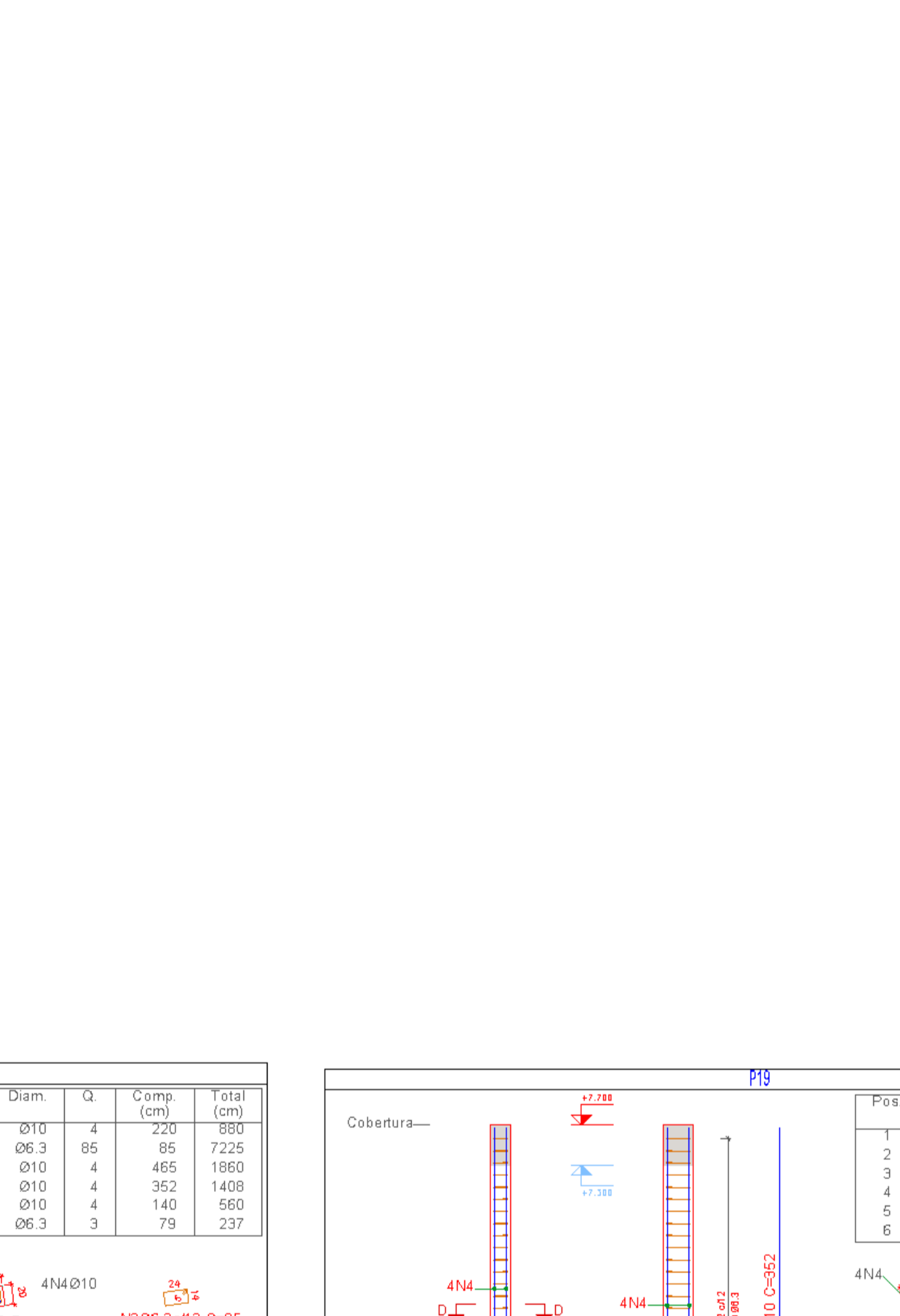
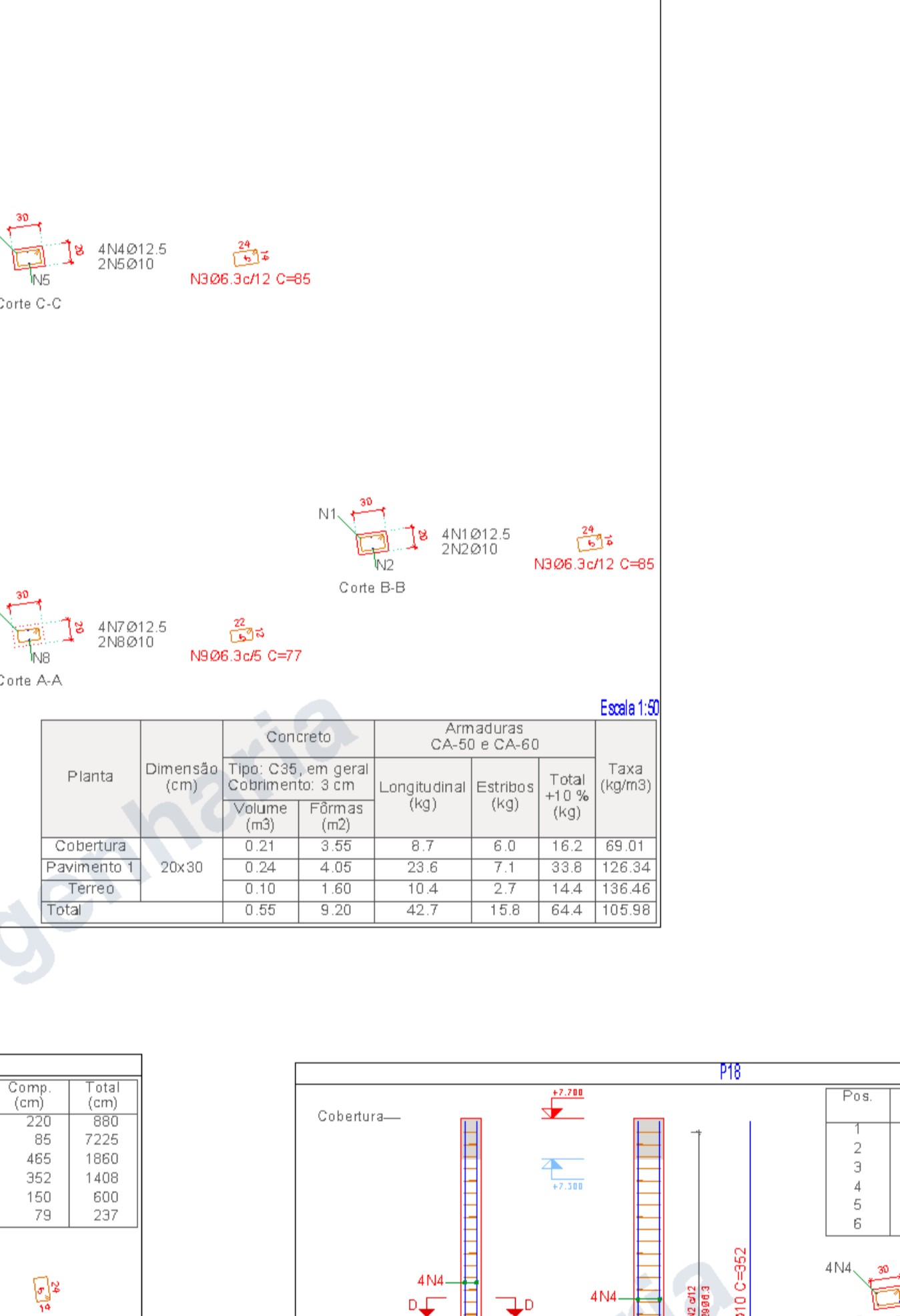
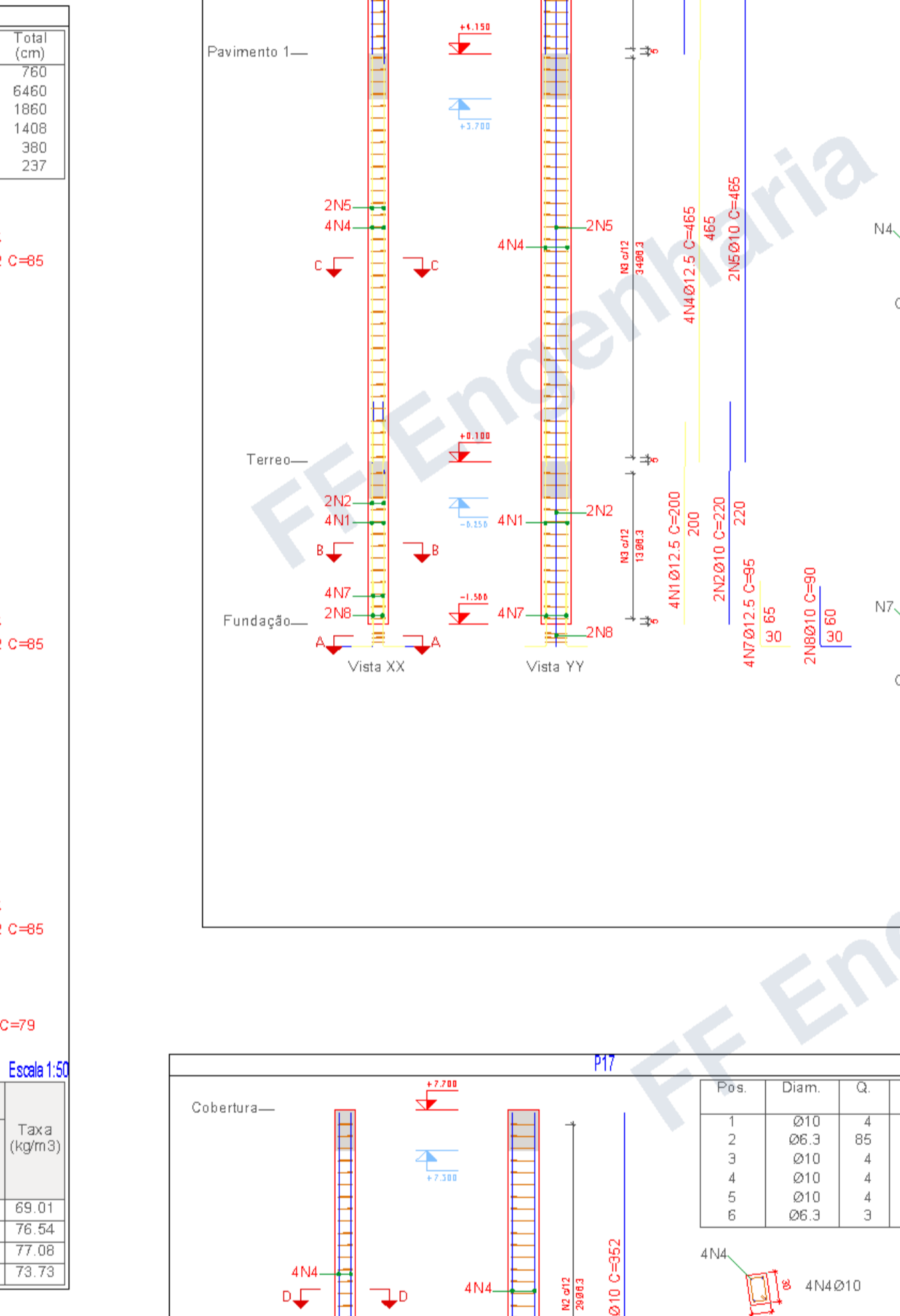
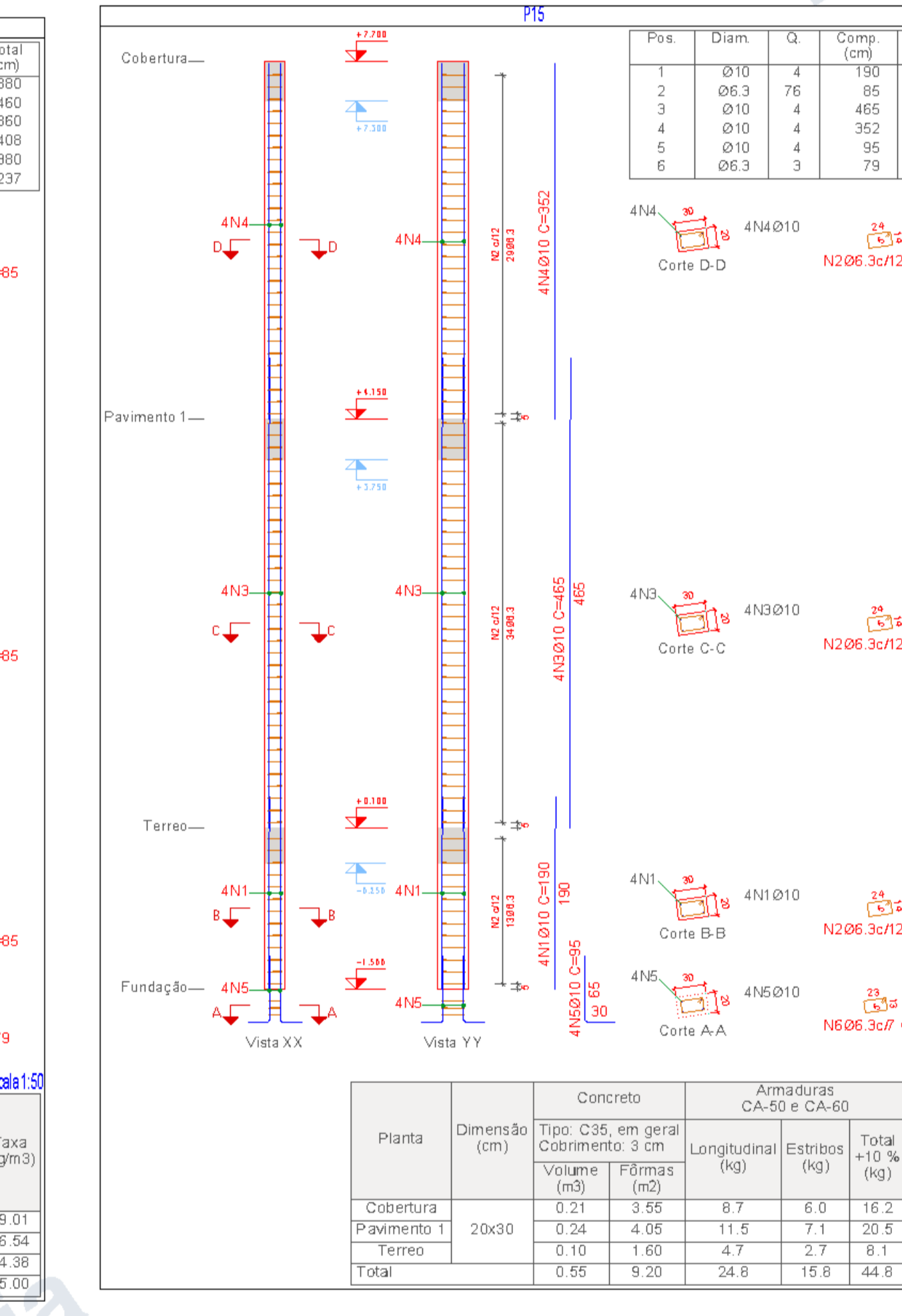
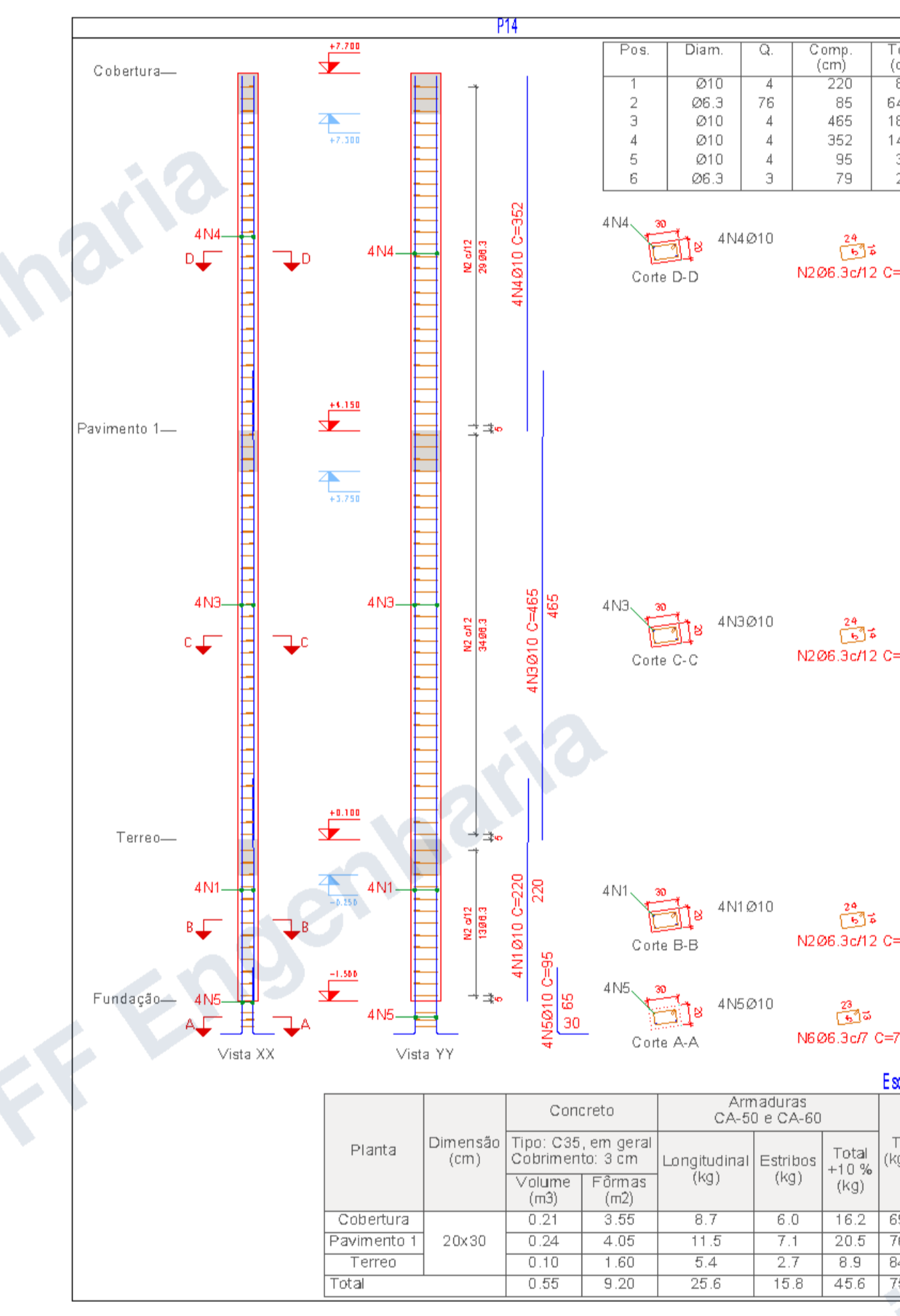
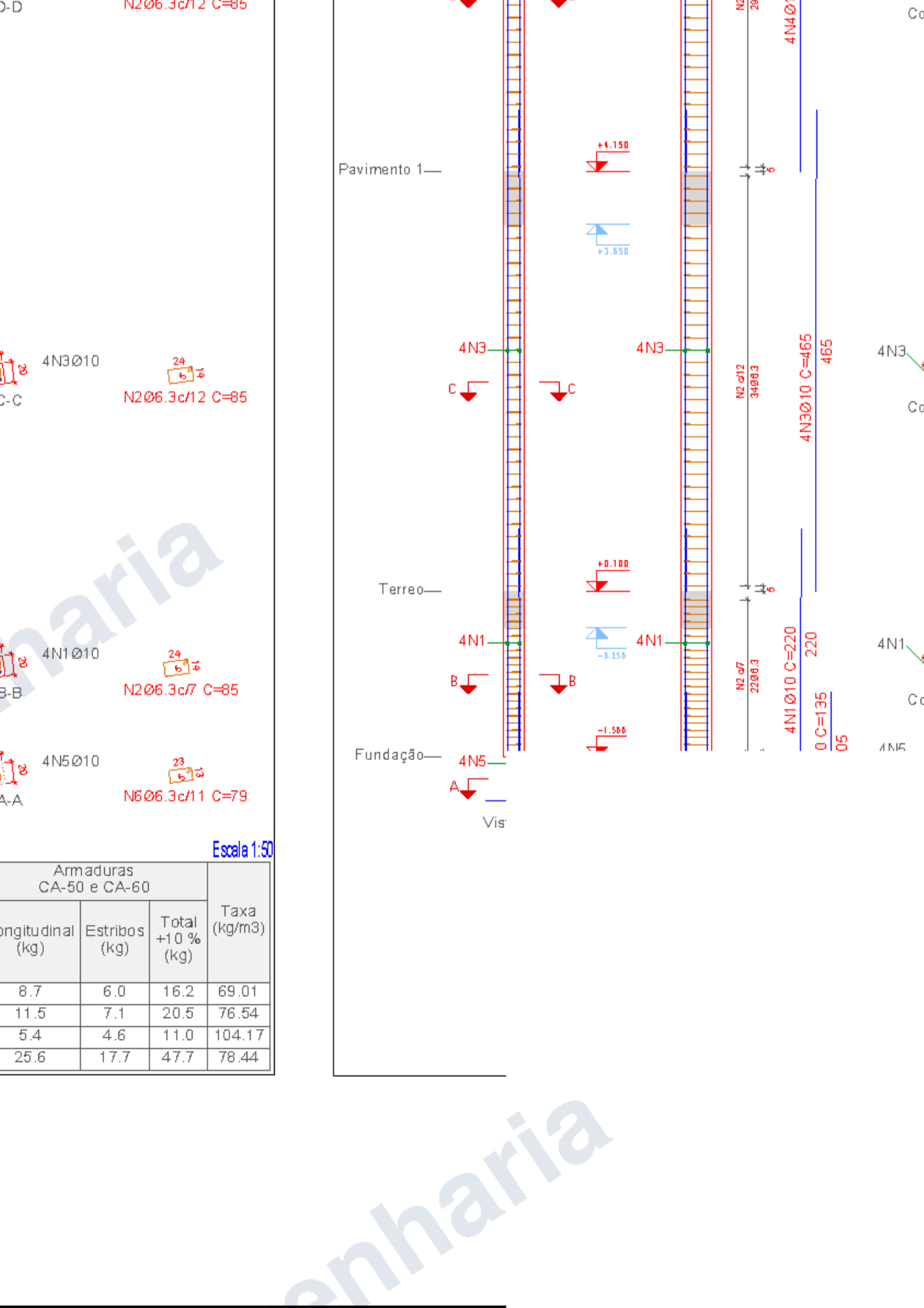
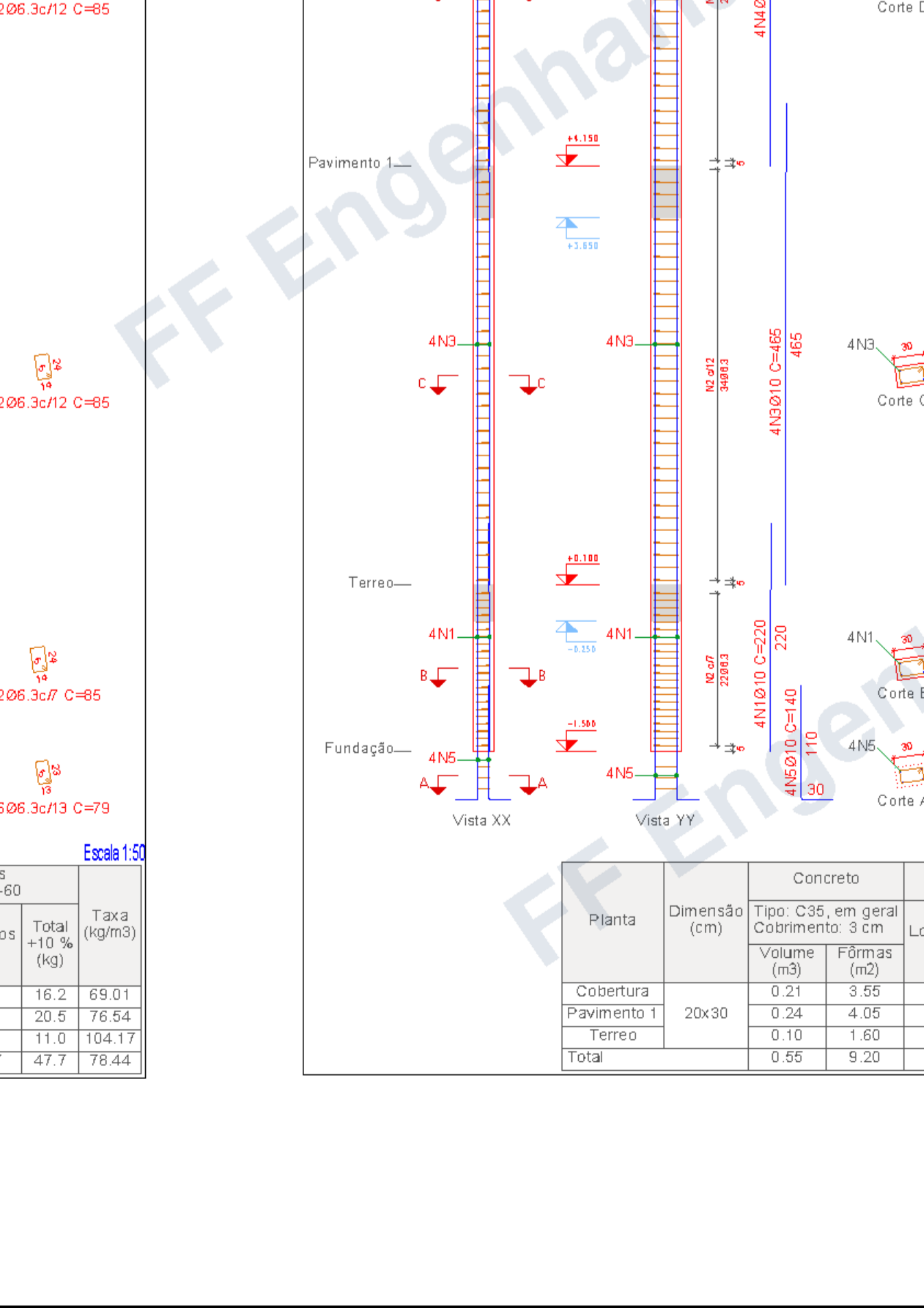
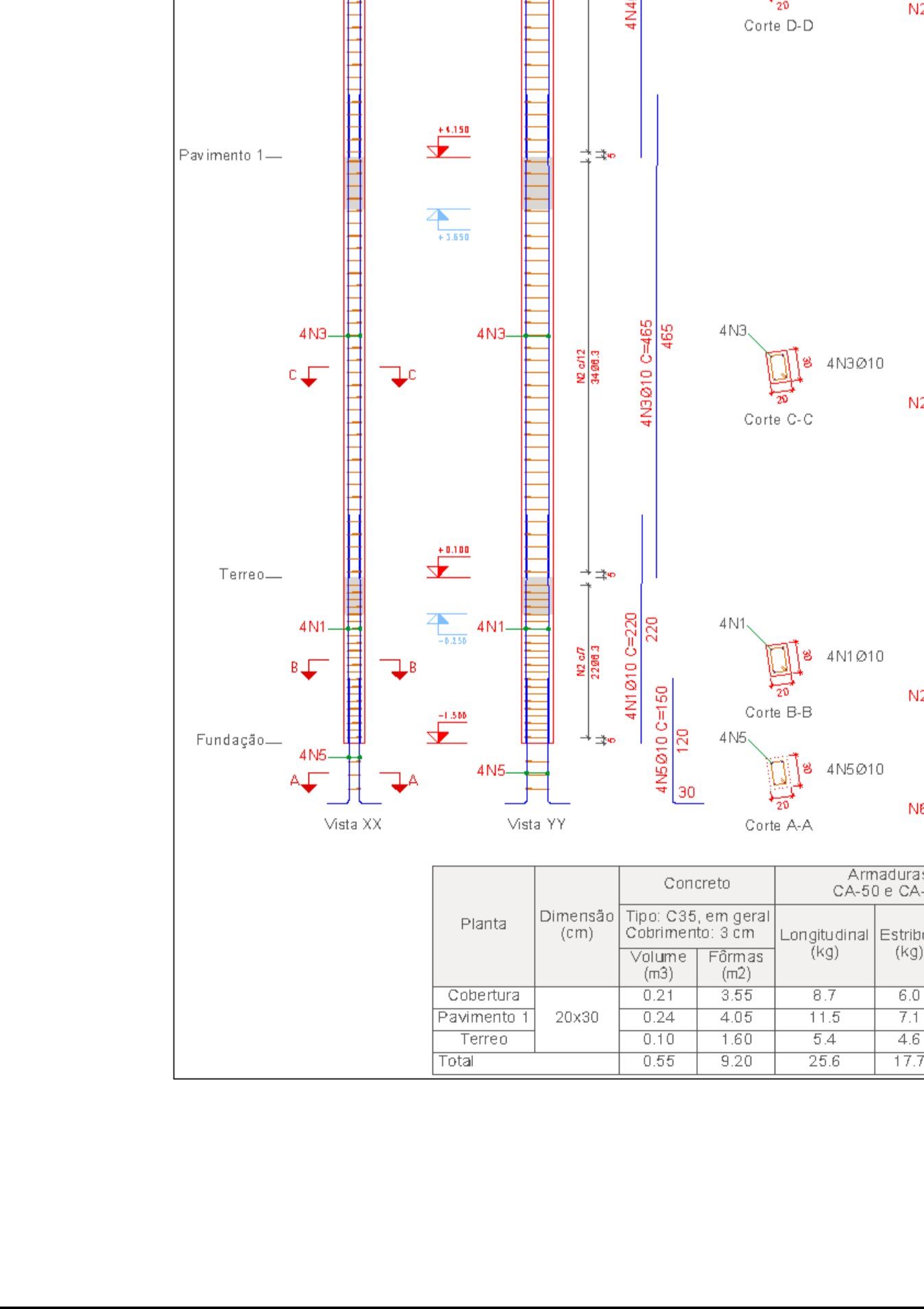


Elemento	Pos.	Diam.	Q.	Esquema (cm)	Comp. (cm)	Total (cm)	CA-50	CA-60			
P10	1	Ø10	4		150	760	4.7				
	2	Ø6.3	76		85	6460	15.8				
	3	Ø10	4		465	1860	11.5				
	4	Ø10	4		352	1408	8.7				
	5	Ø10	4		150	600	3.2				
	6	Ø6.3	3		79	237	0.6				
Total+10%									49.0		
P11	1	Ø10	4		150	760	4.7				
	2	Ø6.3	47		85	3958	9.8				
	3	Ø10	4		435	1740	10.7				
	4	Ø10	4		352	1408	8.7				
	5	Ø6.3	29		75	2115	5.3				
	6	Ø10	4		150	600	3.7				
	7	Ø6.3	3		79	237	0.6				
Total+10%									47.9		
P12	1	Ø10	4		200	800	5.4				
	2	Ø6.3	47		85	3525	8.6				
	3	Ø10	4		402	1608	9.9				
	4	Ø10	4		115	460	2.8				
	5	Ø6.3	3		69	207	0.5				
Total+10%									29.9		
P13	1	Ø10	6		150	1140	7.0				
	2	Ø6.3	76		85	7220	17.7				
	3	Ø6.3	76		21	1596	3.9				
	4	Ø10	4		465	2790	17.2				
	5	Ø10	4		352	2112	13.0				
	6	Ø10	4		150	600	3.5				
	7	Ø6.3	3		79	237	0.6				
Total+10%									69.2		
P14	1	Ø10	4		150	600	5.4				
	2	Ø6.3	76		85	6460	15.8				
	3	Ø10	4		465	1860	11.5				
	4	Ø10	4		352	1408	8.7				
	5	Ø10	4		150	600	3.2				
	6	Ø6.3	3		79	237	0.6				
Total+10%									48.7		
P15	1	Ø10	4		150	760	4.7				
	2	Ø6.3	76		85	6460	15.8				
	3	Ø10	4		465	1860	11.5				
	4	Ø10	4		352	1408	8.7				
	5	Ø10	4		150	600	3.2				
	6	Ø6.3	3		79	237	0.6				
	Total+10%									48.0	
	P16	1	Ø12.5	4		200	800	7.7			
		2	Ø10	3		150	450	2.7			
3		Ø6.3	76		85	6460	15.8				
4		Ø12.5	4		465	1860	17.9				
5		Ø10	3		465	1395	5.7				
6		Ø10	4		352	1408	8.7				
7		Ø12.5	4		95	380	3.7				
8		Ø10	2		90	180	1.1				
9		Ø6.3	3		77	231	0.6				
Total+10%									70.3		
P17	1	Ø10	4		150	600	5.4				
	2	Ø6.3	85		85	7225	17.7				
	3	Ø10	4		465	1860	11.5				
	4	Ø10	4		352	1408	8.7				
	5	Ø10	4		150	600	3.7				
	6	Ø6.3	3		79	237	0.6				
	Total+10%									52.4	
	P18	1	Ø10	4		150	600	5.4			
		2	Ø6.3	85		85	7225	17.7			
3		Ø10	4		465	1860	11.5				
4		Ø10	4		352	1408	8.7				
5		Ø10	4		140	560	3.5				
6		Ø6.3	3		79	237	0.6				
Total+10%									52.1		
P19	1	Ø10	4		150	600	5.4				
	2	Ø6.3	85		85	7225	17.7				
	3	Ø10	4		465	1860	11.5				
	4	Ø10	4		352	1408	8.7				
	5	Ø10	4		135	540	3.3				
	6	Ø6.3	3		79	237	0.6				
Total+10%									51.9	0.0	
									Ø6.3	14.9	0.0
									Ø12.5	12.2	0.0
									Total	518.4	0.0



Planta	Dimensão (cm)	Concreto	Armaduras CA-50 e CA-60	Taxa (+10%)	Taxa (kg/m³)		
Cobertura	15x30	0.21	3.55	8.7	6.0	16.2	69.01
Pavimento 1	20x30	0.24	4.05	11.5	7.1	20.5	76.54
Terceiro	0.10	1.60	2.7	2.7	8.1	77.08	
Total	0.55	9.20	22.9	15.8	44.8	79.73	



Planta	Dimensão (cm)	Concreto	Armaduras CA-50 e CA-60	Taxa (+10%)	Taxa (kg/m³)		
Cobertura	15x30	0.21	3.55	8.7	6.0	16.2	69.01
Pavimento 1	20x30	0.24	4.05	11.5	7.1	20.5	76.54
Terceiro	0.10	1.60	2.4	2.4	7.2	104.17	
Total	0.55	9.20	22.6	17.7	47.7	76.44	

Pilares que nascem em Terreno e chegam em Cobertura
 Concreto: