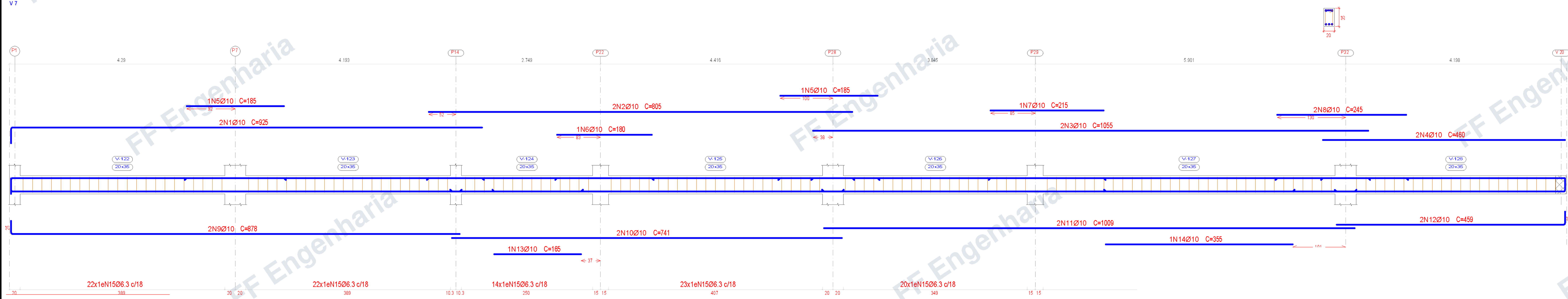
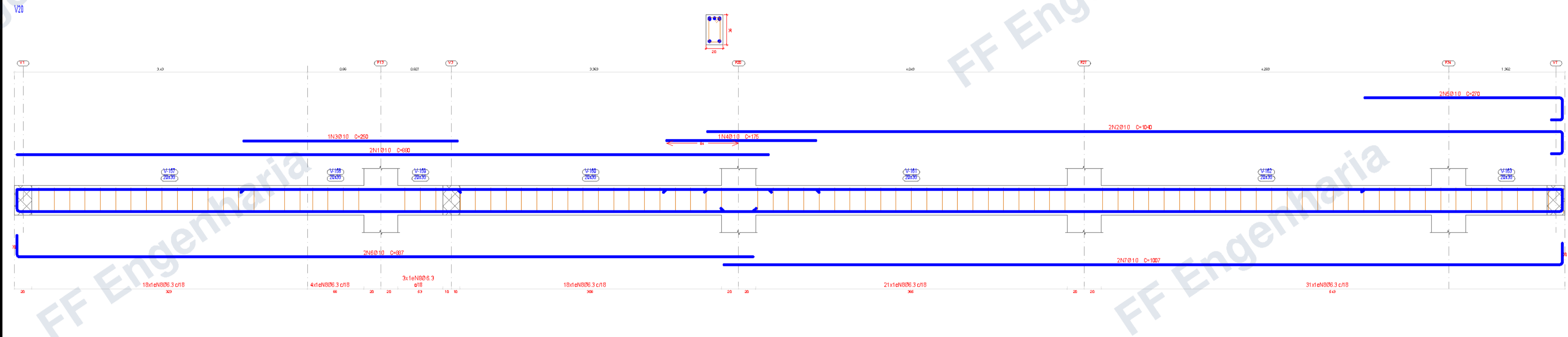
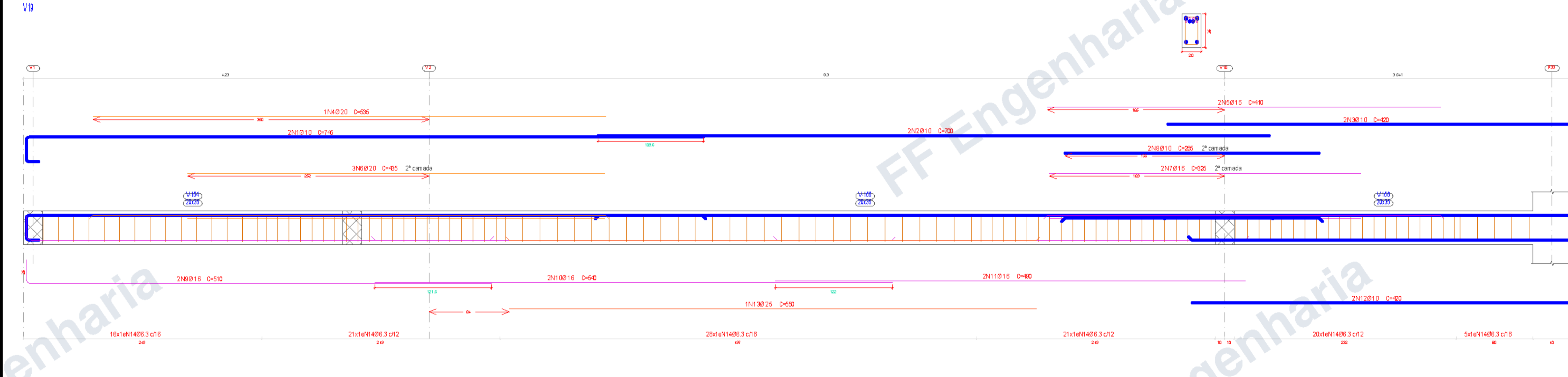
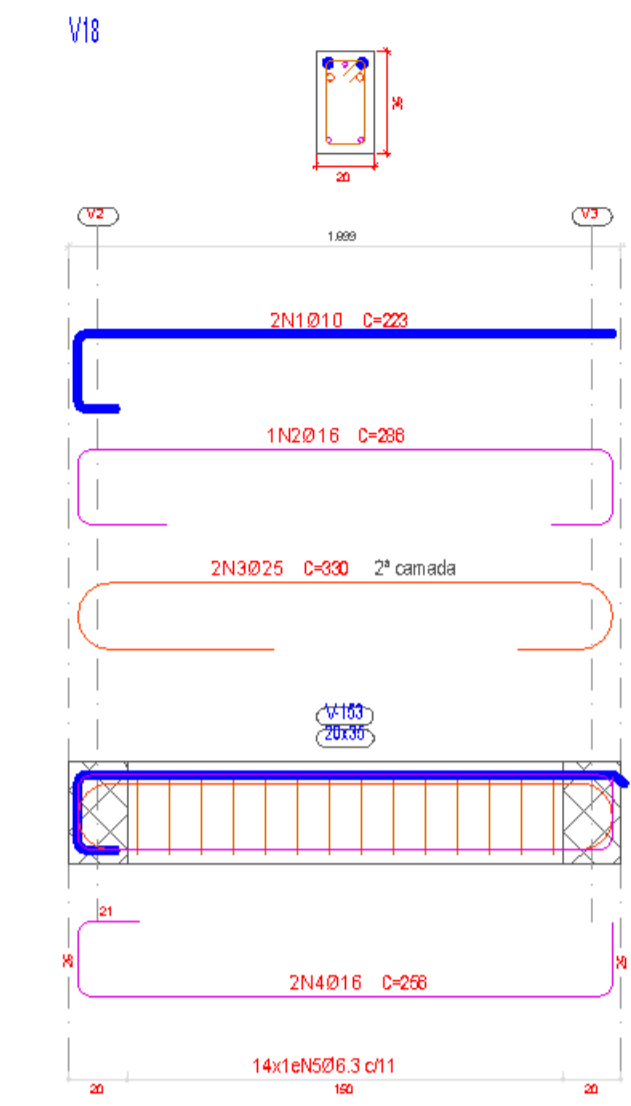
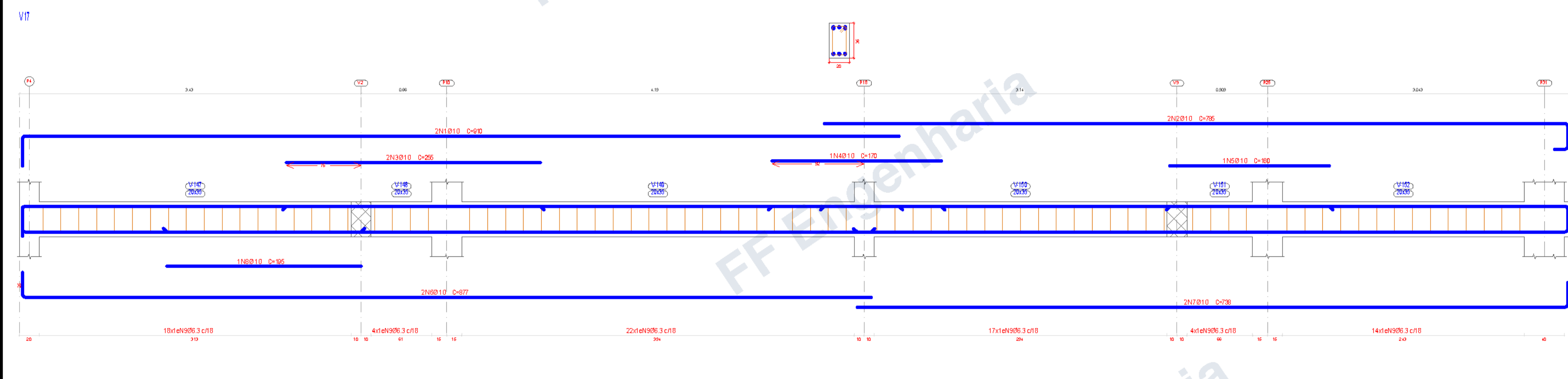


VIGAS TERREO F02



Ferros
 Desenho de vigas
 Concreto: C25, em geral
 Apo das barras: CA-50 e CA-60
 Escala vigas 1:25
 Escala aberturas 1:25

Elemento	Pos.	Diam.	Q.	Esquema (cm)	Comp. (cm)	Total (cm)	CA-50 (kg)	CA-60 (kg)
V17	1	Ø10	2	895	925	1850	11.4	
	2	Ø10	2	805	805	1610	9.9	
	3	Ø10	2	1055	1055	2110	13.0	
	4	Ø10	2	480	480	920	5.7	
	5	Ø10	2	185	185	370	2.3	
V18	1	Ø10	2	895	925	1850	11.4	
	2	Ø10	2	805	805	1610	9.9	
	3	Ø10	2	1055	1055	2110	13.0	
	4	Ø10	2	480	480	920	5.7	
	5	Ø10	2	185	185	370	2.3	
V19	1	Ø10	2	895	925	1850	11.4	
	2	Ø10	2	805	805	1610	9.9	
	3	Ø10	2	1055	1055	2110	13.0	
	4	Ø10	2	480	480	920	5.7	
	5	Ø10	2	185	185	370	2.3	
	6	Ø10	2	180	180	360	2.2	
	7	Ø10	1	215	215	430	2.7	
	8	Ø10	2	245	245	490	3.0	
	9	Ø10	2	895	878	1756	10.8	
	10	Ø10	2	741	741	1482	9.1	
	11	Ø10	2	1009	1009	2018	12.4	
	12	Ø10	2	434	459	918	5.7	
	13	Ø10	1	165	165	330	2.0	
	14	Ø10	1	355	355	710	4.4	
15	Ø6.3	154	96	96	1812	36.2		
Total+10%						137.6	0.0	0.0
Ø6.3:						39.8	0.0	0.0
Ø10:						97.8	0.0	0.0
Total:						137.6	0.0	0.0

Elemento	Pos.	Diam.	Q.	Esquema (cm)	Comp. (cm)	Total (cm)	CA-50 (kg)	CA-60 (kg)
V 7	1	Ø10	2	895	925	1850	11.4	
	2	Ø10	2	805	805	1610	9.9	
	3	Ø10	2	1055	1055	2110	13.0	
	4	Ø10	2	480	480	920	5.7	
	5	Ø10	2	185	185	370	2.3	
	6	Ø10	1	180	180	360	2.2	
	7	Ø10	1	215	215	430	2.7	
	8	Ø10	2	245	245	490	3.0	
	9	Ø10	2	895	878	1756	10.8	
	10	Ø10	2	741	741	1482	9.1	
	11	Ø10	2	1009	1009	2018	12.4	
	12	Ø10	2	434	459	918	5.7	
	13	Ø10	1	165	165	330	2.0	
	14	Ø10	1	355	355	710	4.4	
	15	Ø6.3	154	96	96	1812	36.2	
Total+10%						137.6	0.0	0.0
Ø6.3:						39.8	0.0	0.0
Ø10:						97.8	0.0	0.0
Total:						137.6	0.0	0.0