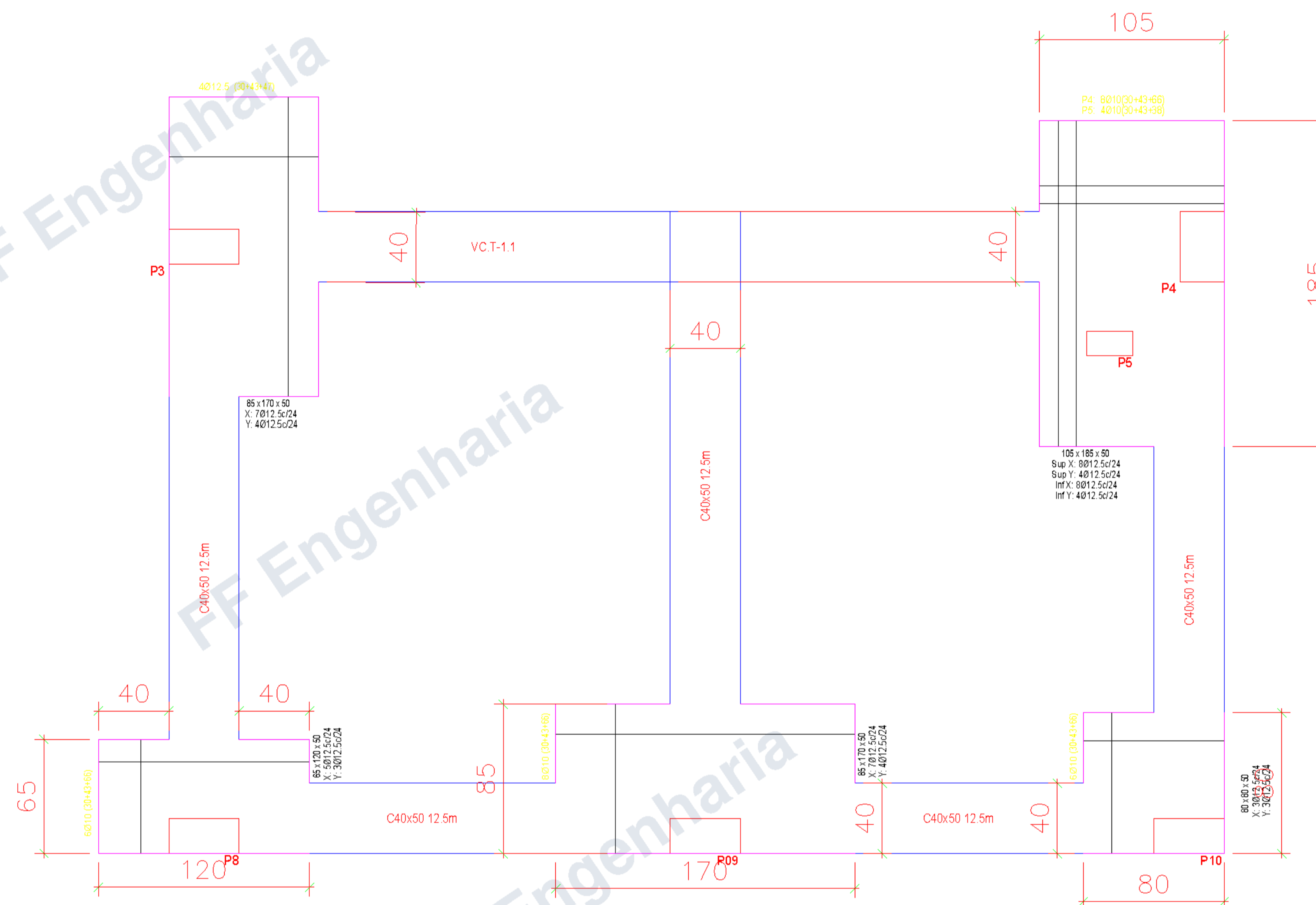
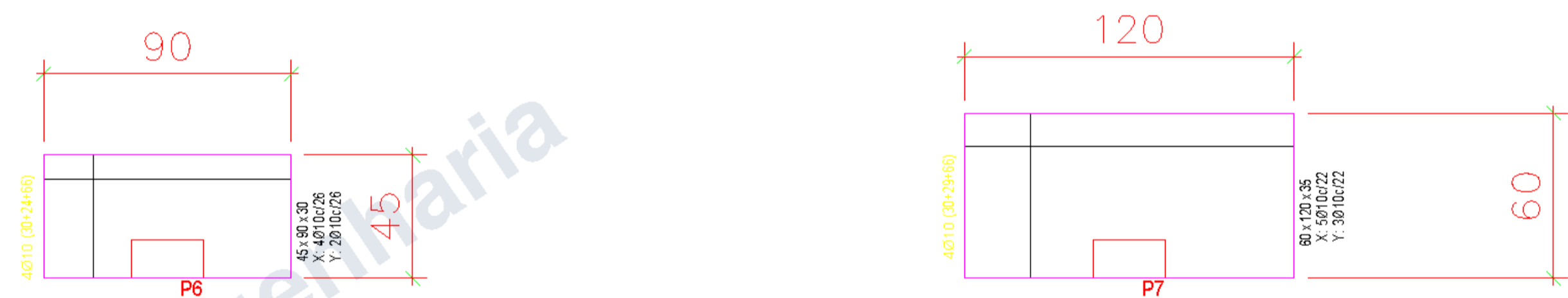




Elemento	Pos.	Diam.	Q.	Dob. (cm)	Reta (cm)	Dob. (cm)	Comp. (cm)	Total (cm)	CA-50 (kg)	
C40x50 12.5m [P10 - (P4-P5)]	1	Ø10	2		397		397	794	4.9	
	2	Ø10	3	19	353		372	1116	6.9	
	3	Ø12.5	3	38	379		417	1251	12.0	
	4	Ø6.3	14		158		158	2212	5.4	
Total+10%:									32.1	
C40x50 12.5m [P09 - (9.67, 3.45)]	5	Ø10	2		411		411	822	5.1	
	6	Ø10	3	22	353	12	387	1161	7.2	
	7	Ø12.5	3	3	393	33	429	1287	12.4	
	8	Ø6.3	21		158		158	3318	8.1	
Total+10%:									36.1	
									Ø6.3:	14.8
									Ø10:	26.5
									Ø12.5:	26.9
									Total:	68.2

Tabela de vigas de equilibrio	
<p>C40x50 12.5m            Arm. sup.: 3Ø12.5            Arm. inf.: 3Ø10            Arm. pele: 1x2Ø10            Estribos: 1xØ6.3c/12</p>	<p>VC.T-1.1            Arm. sup.: 4Ø16            Arm. inf.: 3Ø12.5            Arm. pele: 1x2Ø12.5            Estribos: 1xØ8c/20</p>

QUADRO DE ELEMENTOS DE FUNDAÇÃO						
Referências	Dimensões (cm)	Altura (cm)	Armadura inf. X	Armadura inf. Y	Armadura sup. X	Armadura sup. Y
P1	50x100	50	4Ø12.5c/24	2Ø12.5c/24		
P2	65x130	50	5Ø12.5c/24	3Ø12.5c/24		
P3	85x170	50	7Ø12.5c/24	4Ø12.5c/24		
P6	45x90	30	4Ø10c/26	2Ø10c/26		
P7	60x120	35	5Ø10c/22	3Ø10c/22		
P8	65x120	50	5Ø12.5c/24	3Ø12.5c/24		
P09	85x170	50	7Ø12.5c/24	4Ø12.5c/24		
P10	80x80	50	3Ø12.5c/24	3Ø12.5c/24		
(P4-P5)	105x185	50	8Ø12.5c/24	4Ø12.5c/24	8Ø12.5c/24	4Ø12.5c/24



C40x50 12.5m [P10 - (P4-P5)]

C40x50 12.5m [P09 - (9.67, 3.45)]

