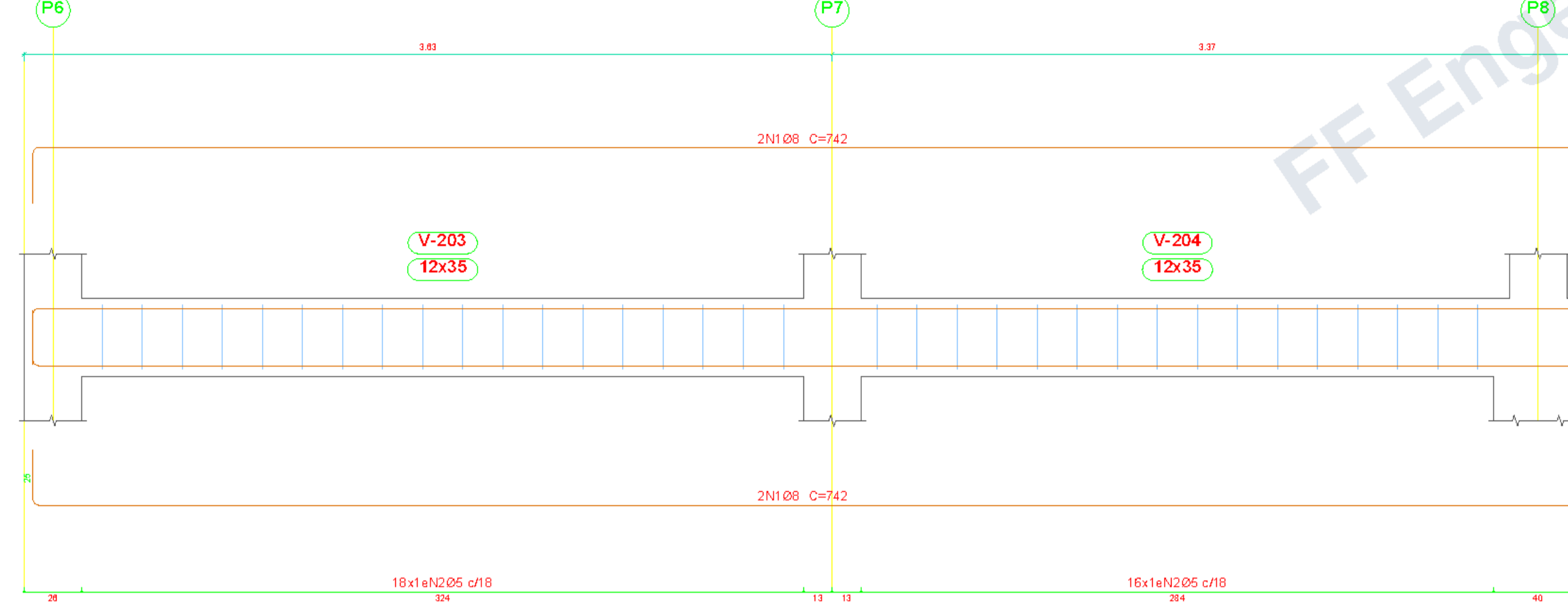
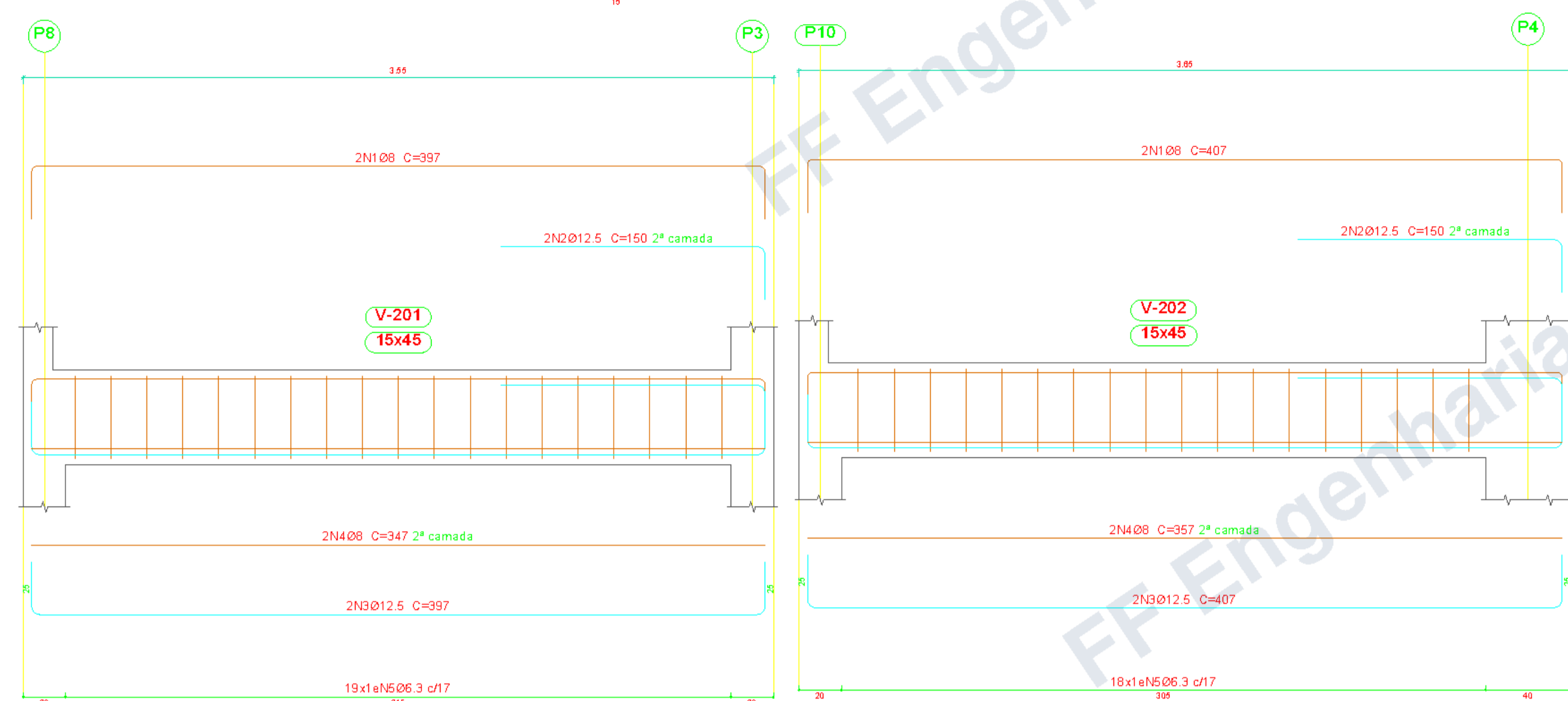


V 1

V 2

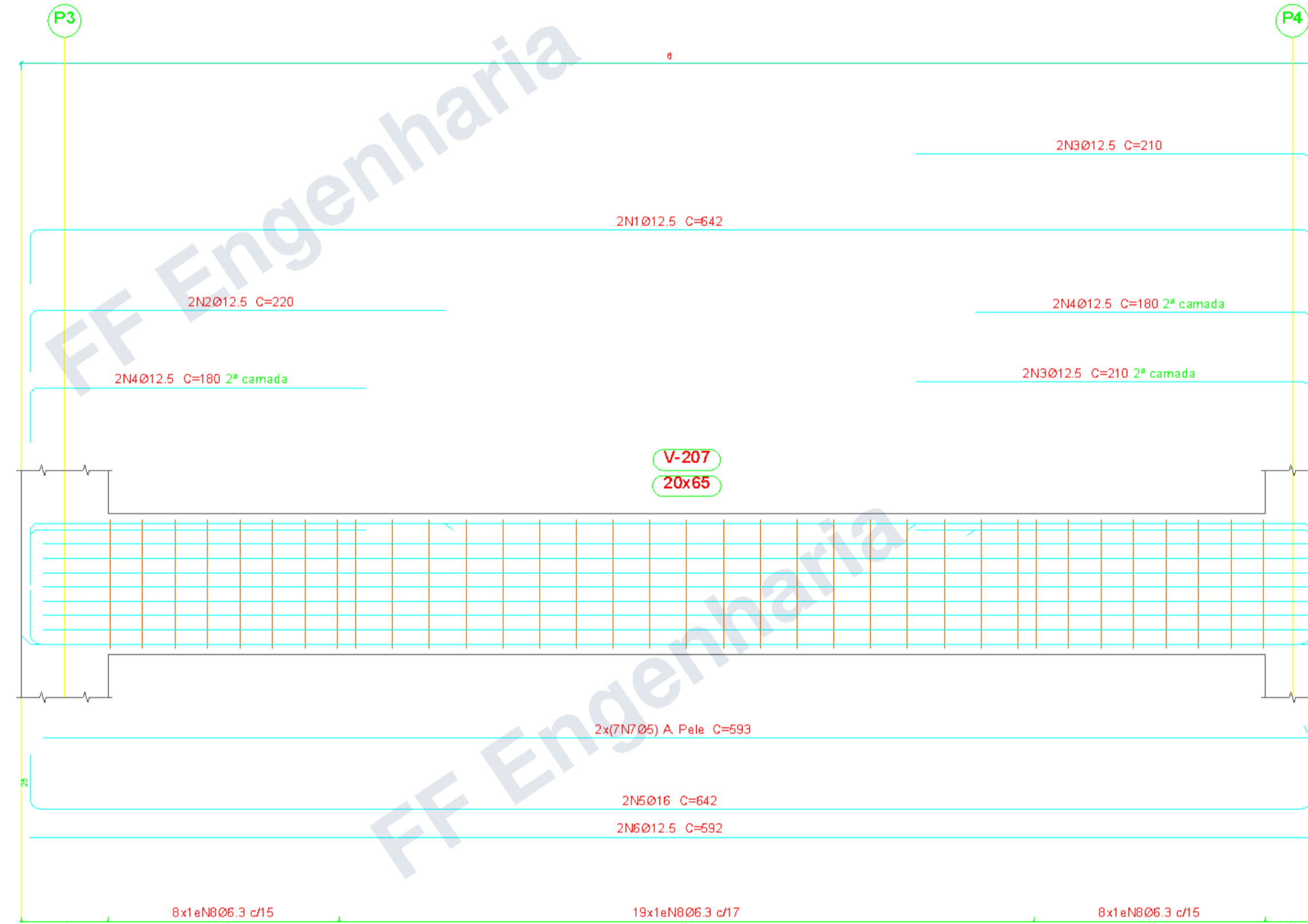
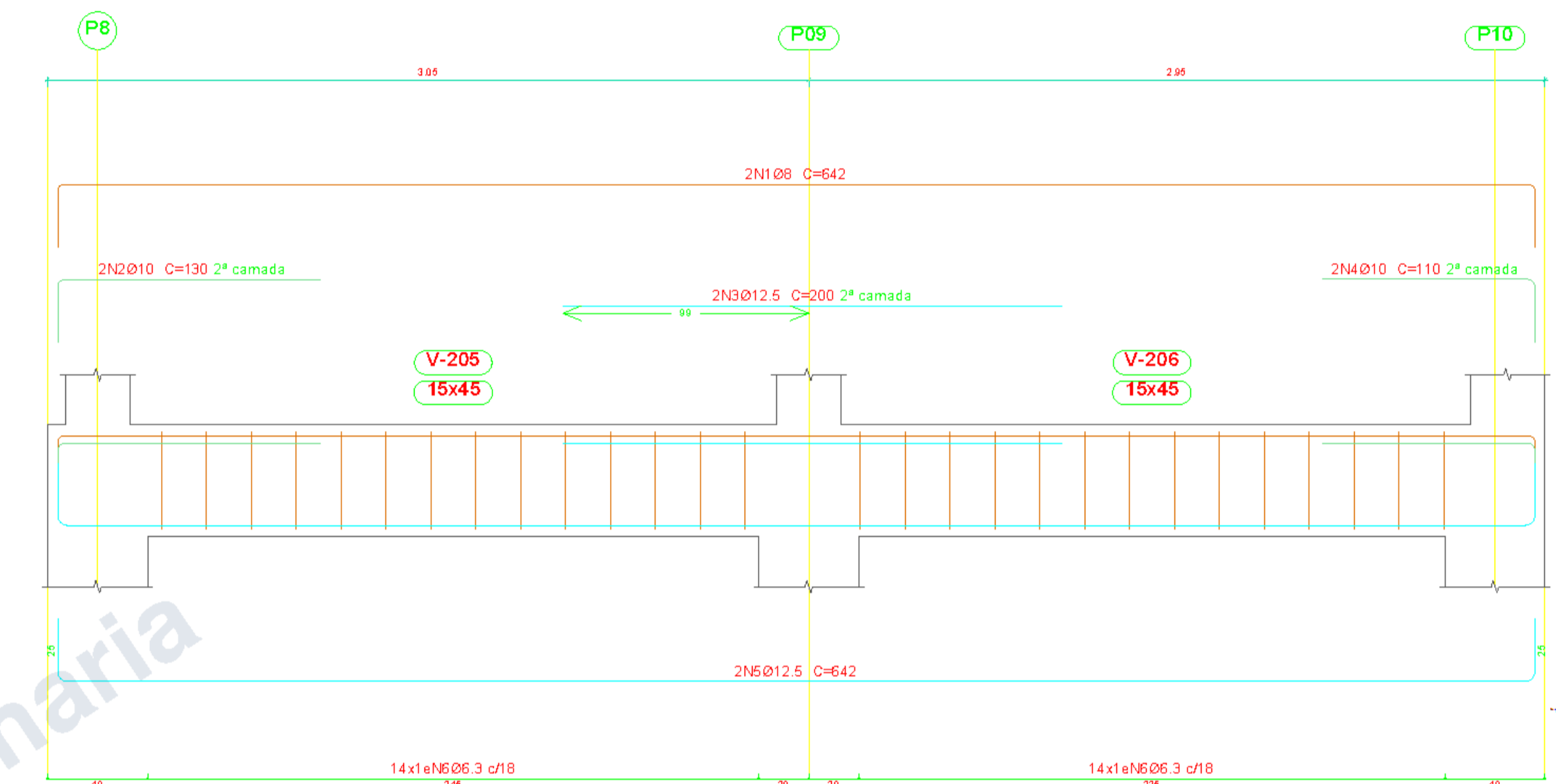
V 3



Vigas Nível piscina H=2.90m

V 4

V 5

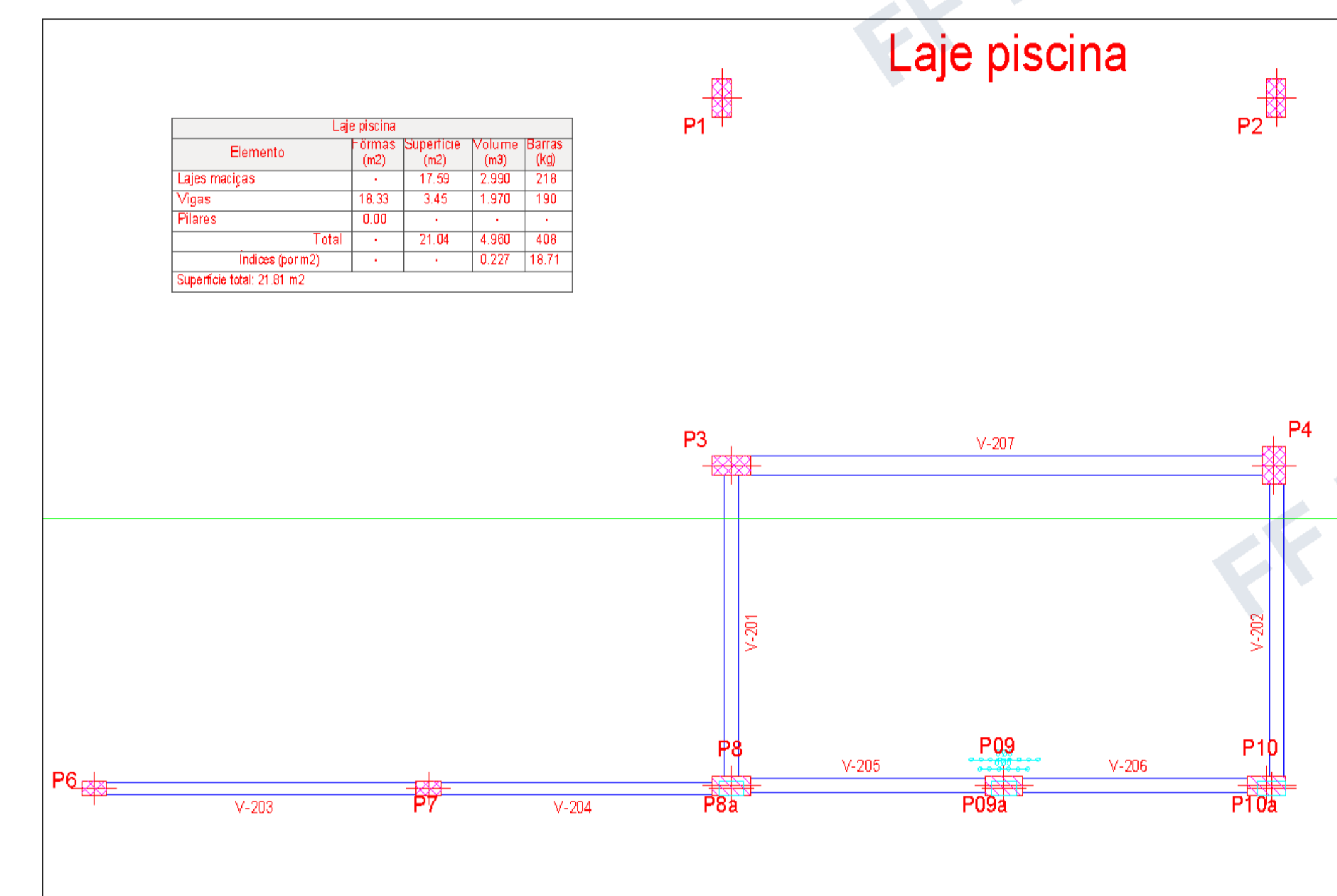


Resumo Aço	Comp. total (m)	Peso+10% (kg)	Total
CA-50	109.5	19	198
Desenho de vigas	Ø5	123.5	33
	Ø8	72.7	32
	Ø10	4.8	3
	Ø12.5	83.6	89
	Ø16	12.8	22

Laje piscina
Desenho de vigas
Concreto: C30, em geral
Aço das barras: CA-50
Escala vigas 1:20
Escala seções 1:20
Escala aberturas 1:20

Elemento	Pos.	Diam.	O.	Esquema (cm)	Comp. (cm)	Total CA-50 (kg)
V 1	1	Ø8	2	150	397	794 3.1
	2	Ø12.5	2	150	150	300 2.9
	3	Ø12.5	2	150	397	794 7.6
	4	Ø8	2	150	347	694 2.7
	5	Ø6.3	19	150	106	2014 4.9
Total+10%:						23.3
V 2	1	Ø8	2	150	407	814 3.2
	2	Ø12.5	2	150	150	300 2.9
	3	Ø12.5	2	150	407	814 7.8
	4	Ø8	2	150	357	714 2.8
	5	Ø6.3	18	150	106	1908 4.7
Total+10%:						23.5
V 3	1	Ø8	4	150	742	2968 11.7
	2	Ø5	34	150	78	2652 4.2
Total+10%:						17.5
V 4	1	Ø8	2	150	642	1284 5.1
	2	Ø10	2	150	130	260 1.6
	3	Ø12.5	2	150	200	400 3.9
	4	Ø10	2	150	110	220 1.4
	5	Ø12.5	2	150	642	1284 12.4
	6	Ø6.3	28	150	106	2968 7.3
Total+10%:						34.9
V 5	1	Ø12.5	2	150	642	1284 12.4
	2	Ø12.5	2	150	220	440 4.2
	3	Ø12.5	4	150	240	540 8.1
	4	Ø12.5	4	150	180	360 6.9
	5	Ø16	2	150	642	1284 20.3
	6	Ø12.5	2	150	592	1184 11.4
	7	Ø5	14	150	593	8302 13.0
	8	Ø6.3	35	150	156	5460 13.4
Total+10%:						98.7
V 1	1	Ø8	2	150	642	1284 5.1
	2	Ø8	4	150	160	320 2.5
	3	Ø10	2	150	642	1284 7.9
	4	Ø10	2	150	510	1020 6.3
	5	Ø6.3	28	150	126	3528 8.6
Total+10%:						33.4
V 3	1	Ø8	2	150	467	934 3.7
	2	Ø10	2	150	190	380 2.3
	3	Ø10	2	150	140	280 1.7
	4	Ø10	2	150	250	500 3.1
	5	Ø10	2	150	442	884 5.4
	6	Ø10	2	150	192	384 2.4
	7	Ø6.3	26	150	94	2444 6.0
Total+10%:						27.1
V 2	1	Ø8	2	150	457	914 3.6
	2	Ø10	2	150	180	360 2.2
	3	Ø10	2	150	130	260 1.6
	4	Ø15	2	150	220	440 2.7
	5	Ø10	2	150	432	864 5.3
	6	Ø10	2	150	167	334 2.1
	7	Ø6.3	26	150	94	2444 6.0
Total+10%:						25.9

Cobertura
Desenho de vigas
Concreto: C30, em geral
Aço das barras: CA-50
Escala vigas 1:20
Escala seções 1:20
Escala aberturas 1:20

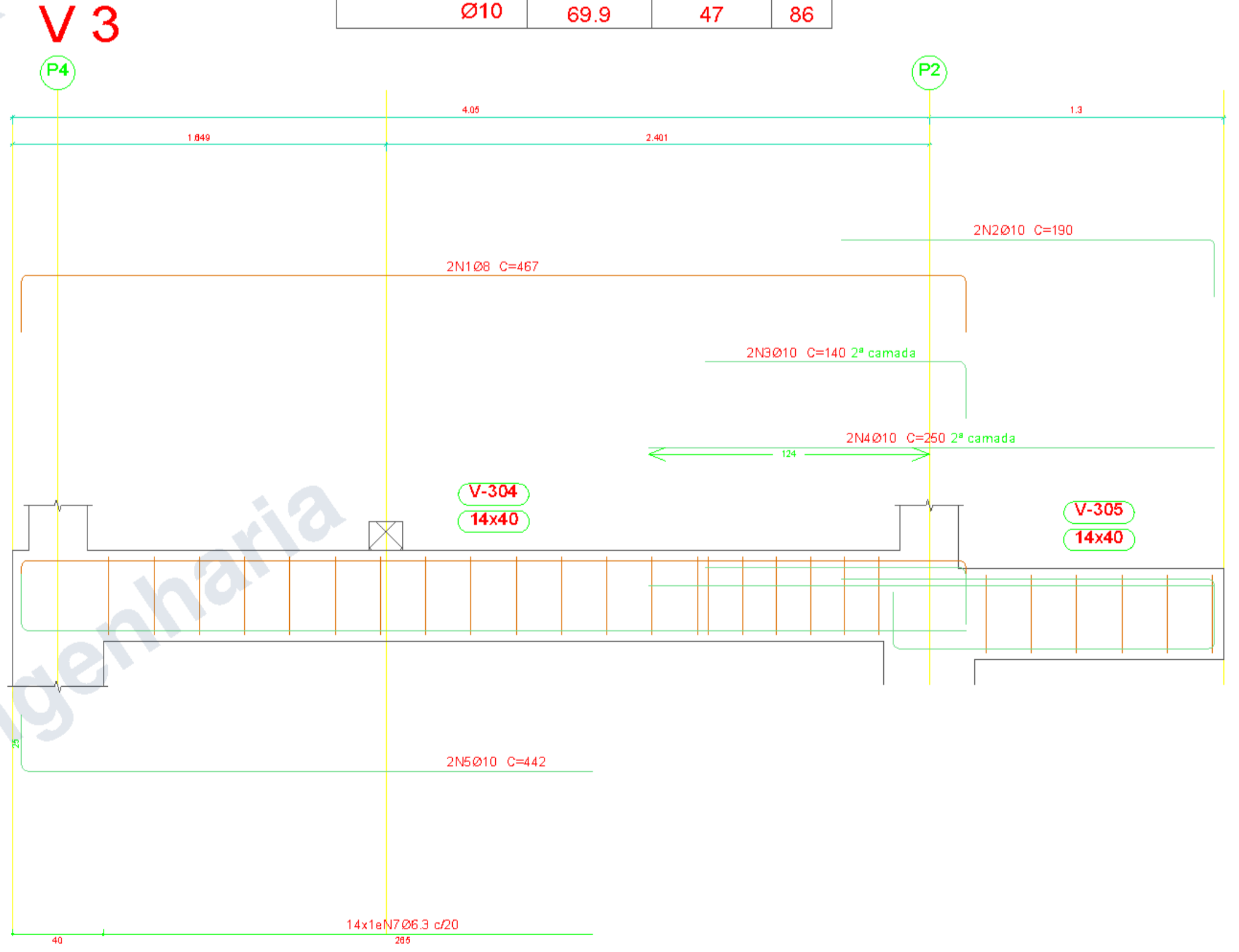
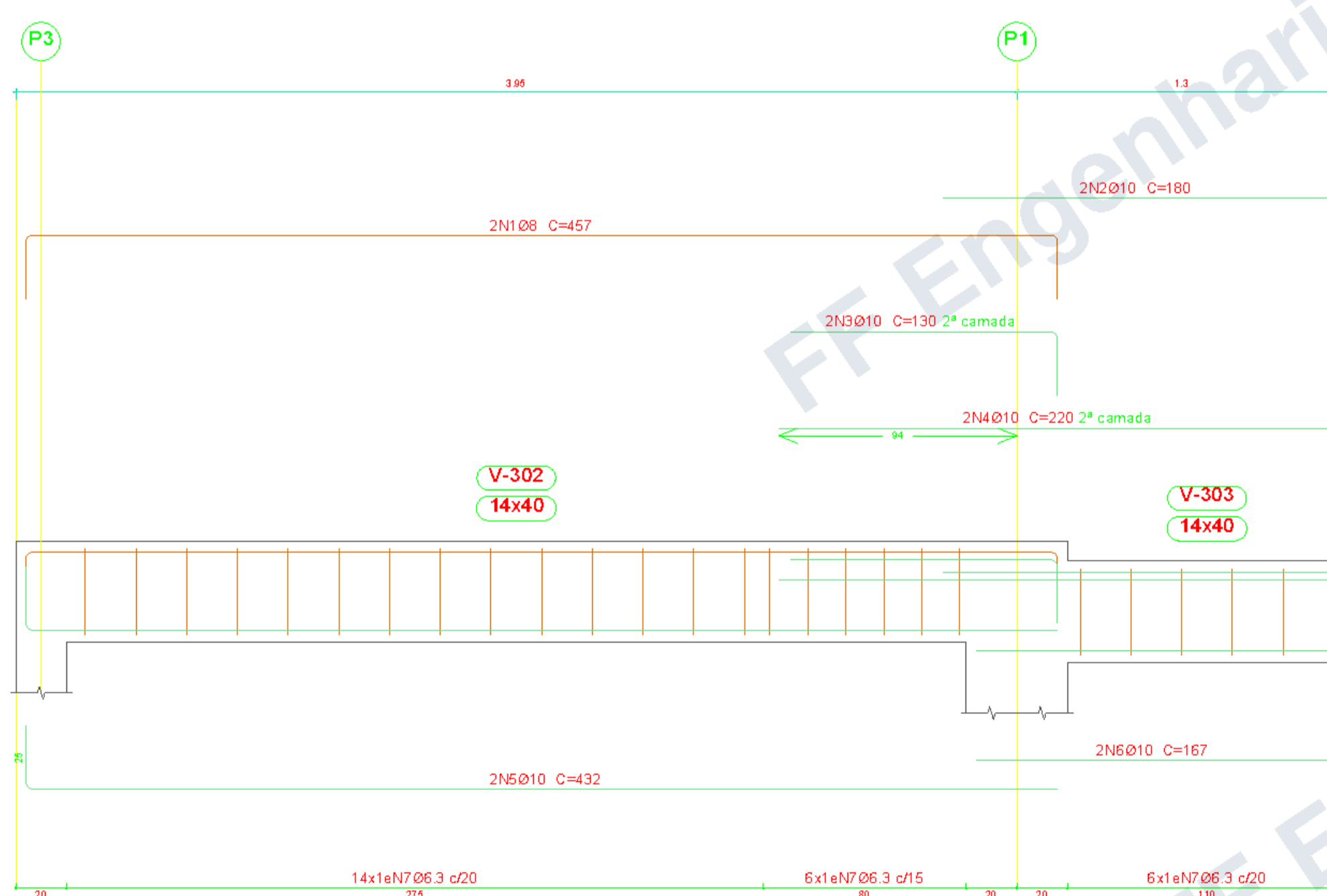
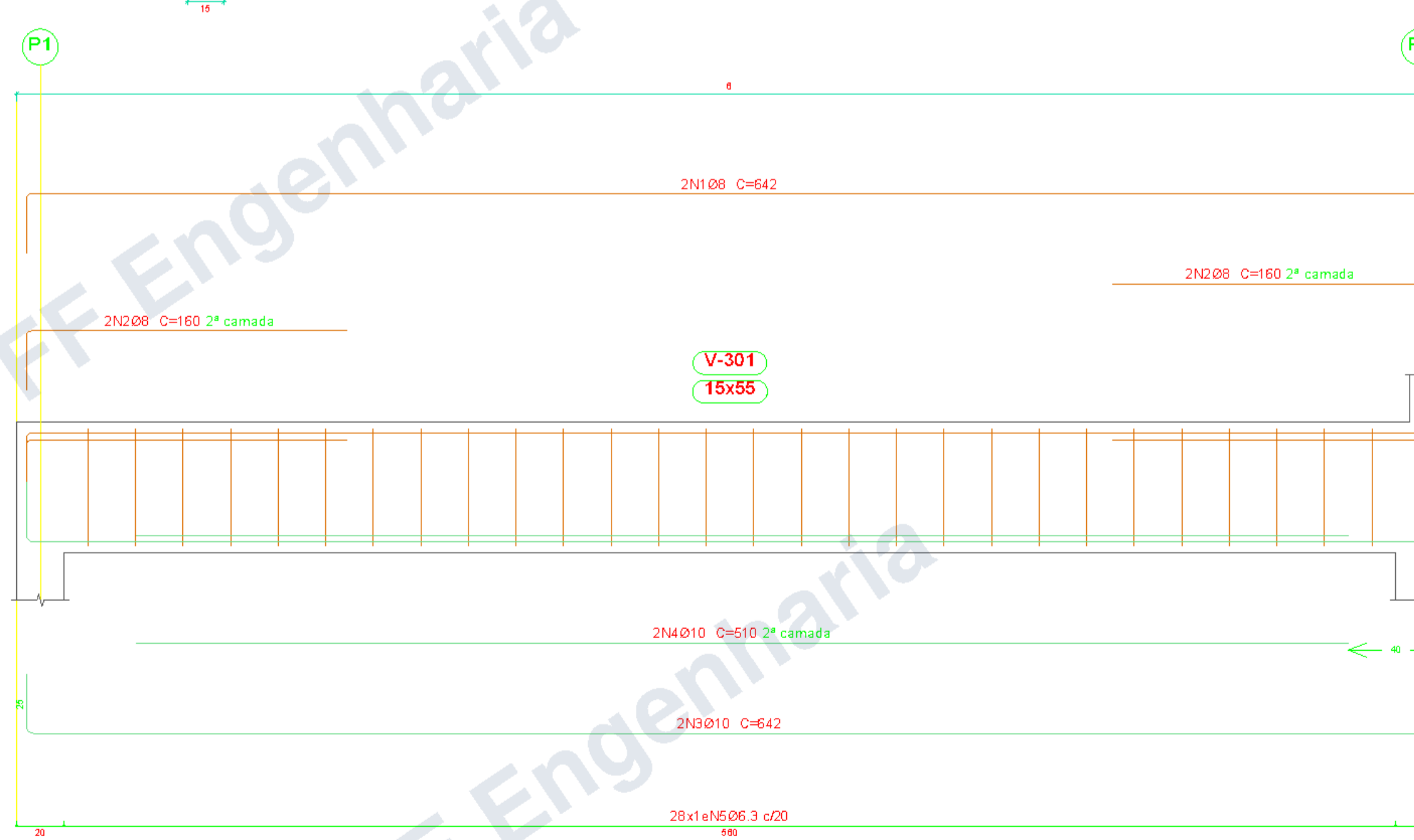


Vigas Cobertura H=3.3m

V 1

V 2

V 3



Resumo Aço	Comp. total (m)	Peso+10% (kg)	Total
CA-50	84.2	23	86
Desenho de vigas	Ø6.3	37.7	16
	Ø8	69.9	47
	Ø10		